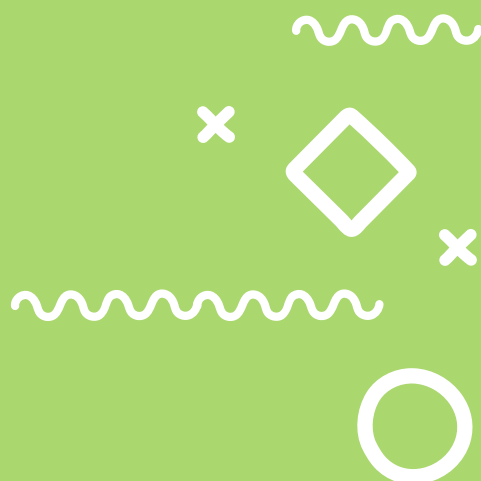




# Annual Report 2019

**We change lives through the consistent delivery of programs, lectures, and events for individuals with Down syndrome, their families, and the community, at no cost to participants.**



# Contents

<b>We Are Statement</b>	<b>2</b>
From Our Board President	5
Vision and Mission	6
What Makes Us Unique	8
Our Founders' Principles	10
Our National Network	13
<b>GiGi's Playhouse NYC's 2019 Achievements</b>	<b>14</b>
<b>Where Our Families Live</b>	<b>16</b>
<b>Ages Served at GiGi's Playhouse NYC</b>	<b>18</b>
<b>From Our NYC Playhouse Staff</b>	<b>23</b>
<b>GiGi's Playhouse NYC Programs</b>	<b>24</b>
Spring-Fall Programs	26
Summer Programs	28
Program Spotlights	30
<b>Generation G</b>	<b>32</b>
<b>Financial Overview</b>	<b>36</b>
Donors and Supporters	38
<b>Special Events</b>	<b>40</b>
2nd Annual Fashion Show	40
Gratitude Art Committee	42
Peanut Butter Falcon Screening	43
<b>7th Annual "i have a Voice" Gala</b>	<b>44</b>
<b>Resources and Partners</b>	<b>46</b>
<b>Growing Our Future</b>	<b>51</b>
Take Action	52
<b>Volunteers</b>	<b>54</b>
<b>Boards and Staff</b>	<b>56</b>
<b>A View of Our Community</b>	<b>58</b>





"Initially, I volunteered at GiGi's NYC because of my brother Peter and seeing first hand how he was growing, being a part of this family."



"Now I volunteer because of ALL our participants with Down syndrome and their families. This is an amazing community, committed to always supporting one another, which provides me the inspiration to be the best I can be, having the most positive impact I can."



# Letter from Our Board President



2019 marked another year of achievement for our GiGi's NYC community. We are forever grateful to our donors and sponsors, for their continuous support and advocacy of our mission. Their generosity also sustained our network of over 140 dedicated volunteers who gave nearly 4,000 hours of their time delivering our programs and events. We thank you all for your belief and efforts making our organization shine brightly in our seventh year.

## 2019 Achievements:

- We launched our "We have a Voice" Community Chorus comprised of individuals with Down syndrome, their friends and family, conducted by Broadway's Laurie Gamache. They successfully performed at venues throughout NYC, lifting hearts wherever they sang.
- Our 007 themed "I have a Voice" Gala celebrated 7 years of serving our community and their accomplishments. Meredith Vieira was our Master of Ceremonies. It was a successful fundraiser and memorable evening.
- Our summer programs with 44 volunteers delivered 1,800+ hours of programming, serving over 50 individuals with Down syndrome from toddlers to adults.
- Our 2nd Annual Fashion Show Presented by Bloomingdale's, hosted by our Associate Board featured 34 runway models with Down syndrome as 350+ guests cheered them on. We were featured in the Associated Press and achieved thousands of media placements.
- Our 6th annual "Dancing for Down Syndrome" party grass roots fundraiser celebrated our community in all its diversity.
- We introduced our participants to The SuperYou FUNdation with a curriculum for students to notice the superhero qualities in themselves and others so they feel empowered to positively impact the world around them. SuperYou the Musical is Broadway-bound, created by Lourds Lane and produced by Melissa Jones.
- We grew our board and committees, increasing our ability to serve our community.
- We increased our roster of those individuals with Down syndrome we serve to over 970.

## New Partnerships:

- Marymount School of New York
- NYU Speech Pathology Program
- Positive Exposure 109, Rick Guidotti and Liz Matejka Grossman
- Regis High School
- The SLC Impact Group, Radhika Sawh
- Société Générale
- Sol La Ti, Gabrielle Tranchina
- Street Corner Resources, Founder/CEO Ilesha Sekou
- The SuperYou FUNdation and SuperYou the Musical.
- Michael Vaughan, Creative Director, NYC
- Hon. Willam A. Allen, 70 Assembly District Leader (Harlem-Manhattan NYC)

Again, we thank our donors and sponsors, whose commitment and support make all we do possible; improving the lives of those with Down syndrome and their families, increasing their visibility and interaction with the world. We look forward to the following pages reinforcing that we are humble stewards of your trust.

**Frank Sawyer**  
**Board President**



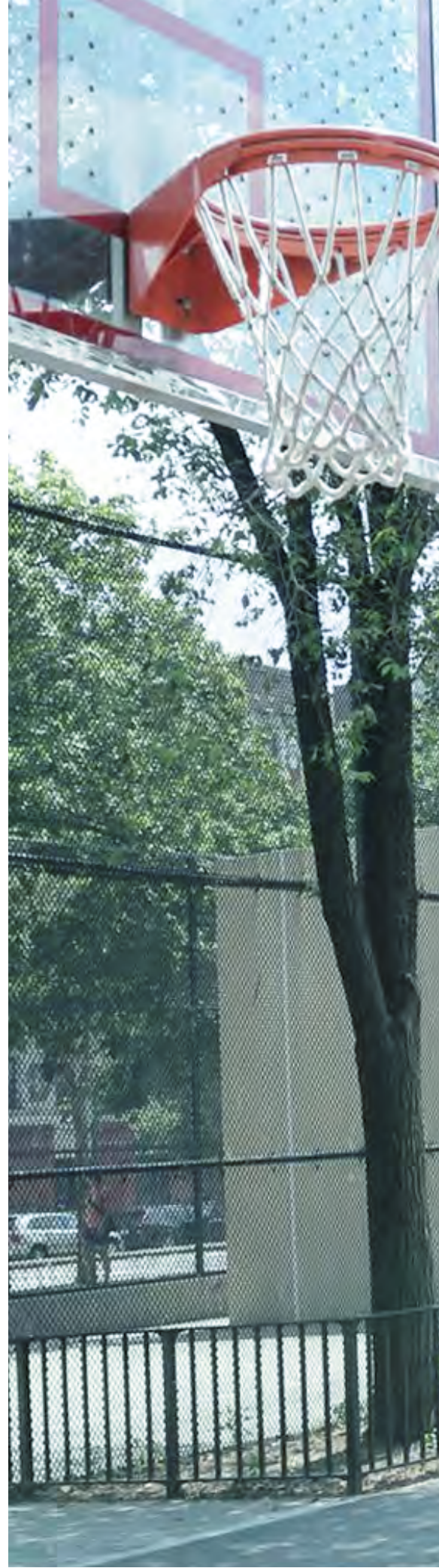


## Vision

Our vision is to see a world where individuals with Down syndrome are accepted and embraced in their families, schools and communities. In doing so, we advance a global vision of acceptance for all.

## Mission

Our mission is to increase positive awareness of Down syndrome through national campaigns, educational programs and by empowering individuals with Down syndrome, their families and the community.









# What makes GiGi's Playhouse NYC unique?



**A Community Center** where families gather to celebrate, inspire and empower each other; to attend programs, lectures and events that promote self-esteem and self-advocacy, and to find support and friendship.



**An Education Center** where weekly educational and social programs prepare individuals with Down syndrome to engage more fully in their homes, communities and schools.



**An Achievement Center** dedicated to changing New York's perception of Down syndrome, so that the abilities and contributions of our community are recognized and embraced by all.



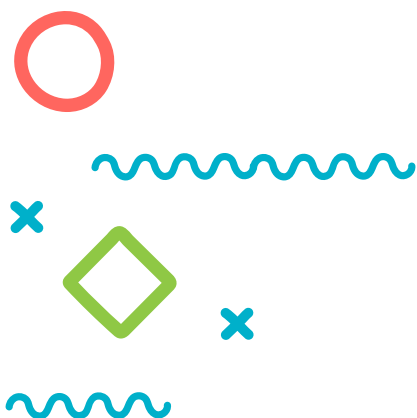


**Community  
Center**

**Achievement  
Center**



**Education  
Center**



## Our Founders' Principles

Having founded GiGi's Playhouse Inc. 17 years ago, Nancy Gianni has gone on to inspire and assist in the establishment of 57 Playhouses with 12 emerging/startup locations (and counting) throughout the U.S. and Mexico.

Thanks to Nancy's inspiration, combined with the vision, resources and perseverance of our intrepid founders, Tracy Nixon and Debbie Morris, GiGi's Playhouse NYC opened its doors in 2012.

7 years later, we are the only organization in New York City dedicated to solely serving the Down syndrome community. GiGi's Playhouse NYC is realizing its vision and mission. We are changing the perception of Down syndrome in New York City and beyond.



GiGi's Playhouse, Inc. and its subsidiaries, including GiGi's Playhouse NYC, carry a 501(c)(3) exemption.













57 playhouses (including the 12 emerging/startup locations)

## Changing the way the world accepts people with Down syndrome.

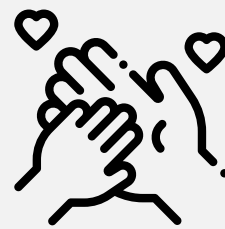
- One individual.
- One diagnosis.
- One community at a time.

# 2019 Achievements



3,938

Volunteer Hours



234

Unique Families Served



211

Total Volunteers







121

New Families



1

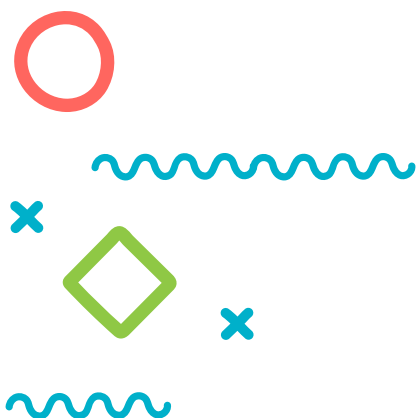
Voice United in Taking Action for  
Lasting Acceptance



0

Cost to Families





## Where Our Families Live

Families travel from all five boroughs, New York State and New Jersey to attend programs at GiGi's Playhouse NYC.

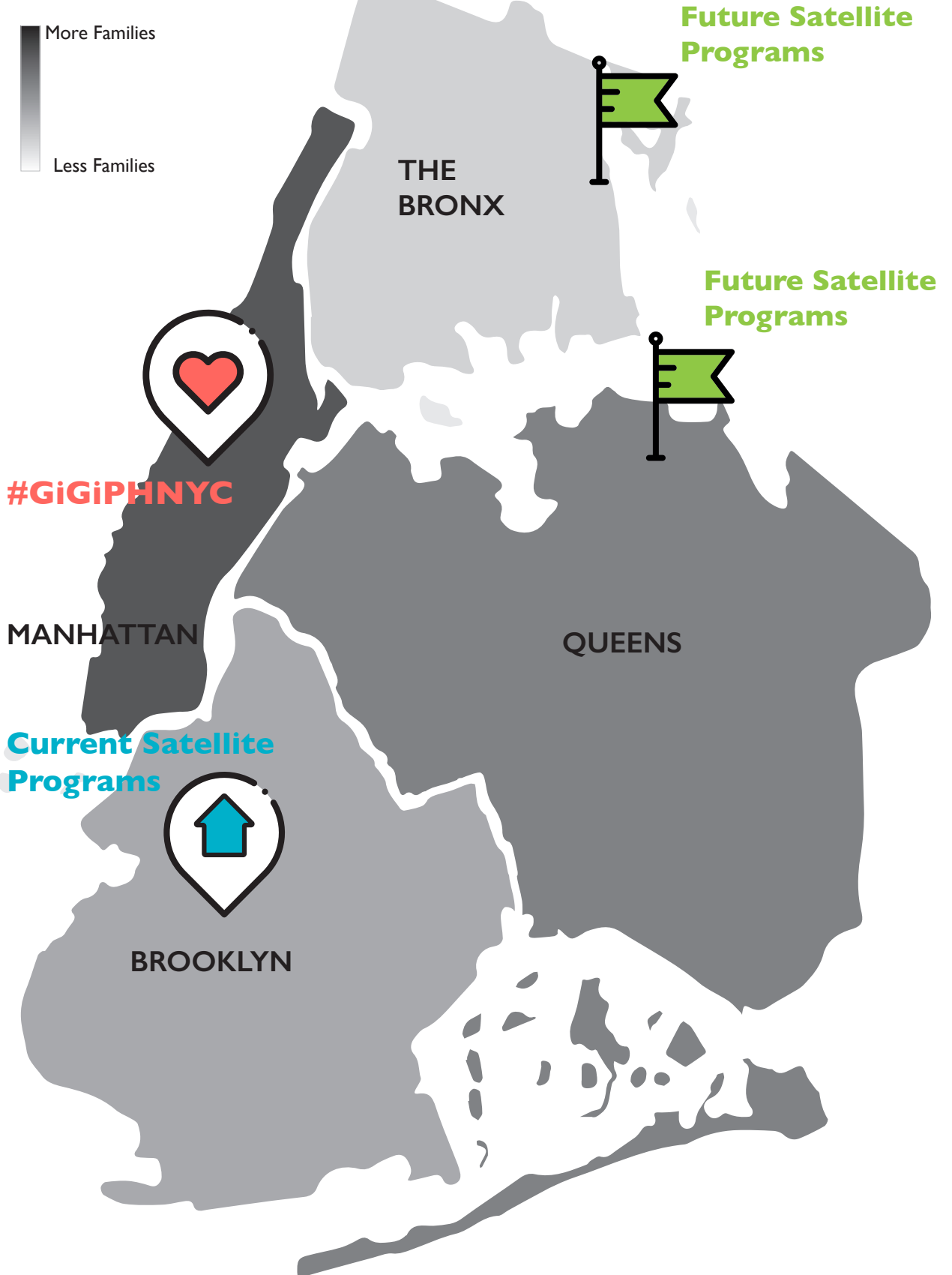
We are expanding our reach with more satellite programs in development.

**Future Satellite Programs**

**STATEN ISLAND**

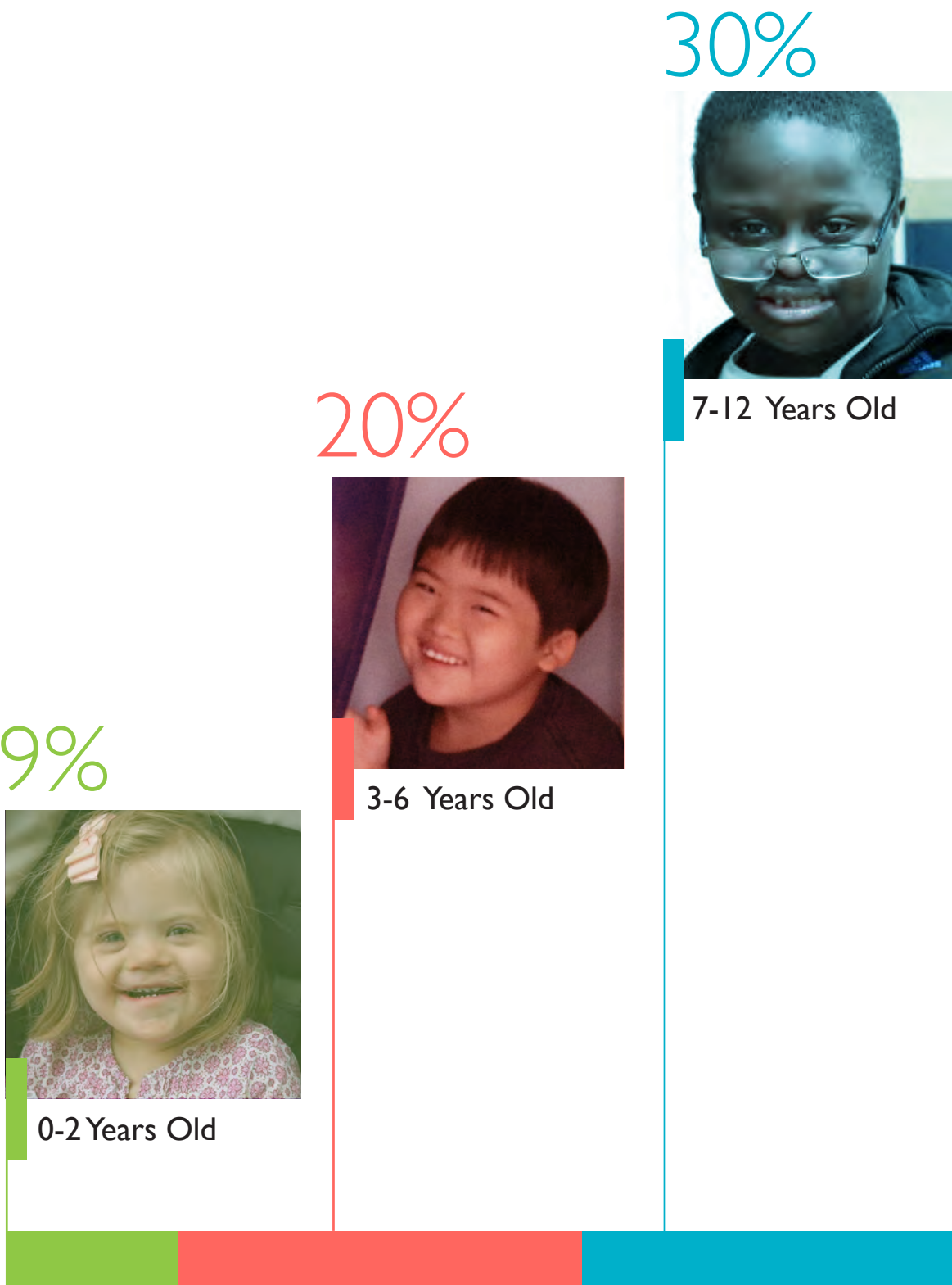




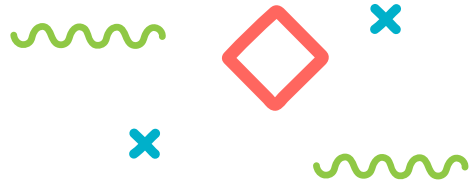


7% NY State, 10% Out of State

# Ages Served at GiGi's Playhouse NYC







22%

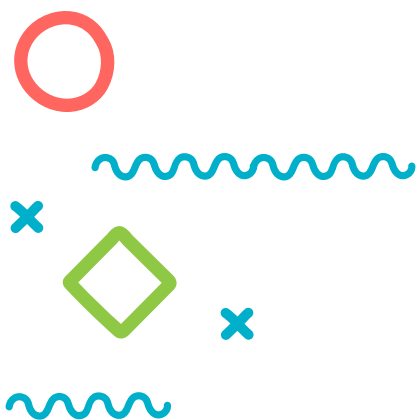


13-19 Years Old

19%



20+ Years Old



**“My son is non-verbal and often spends time with special needs children without Down syndrome. GiGi’s NYC has been a great community which allows kids to flourish individually. He has made friends with kids who have higher function. They are very supportive and protective of him. He loves the programs.”**

**-Kurt Abrams, Playhouse Parent**







NEW YORK CITY BODYWALK  
ADVOCATE | CELEBRATE

T O OUR ORS!

Gillette TREO

ares

BIMBO Bakeries USA

WILL ENTERPRISES

clear Channel

BRAID BAR

FOUNDATION

clear Channel





# Letter from our Playhouse Staff

After our 7th year of serving the Down syndrome community in New York City, we are so proud to say that our voices are growing bolder and greater as we are seeing our amazing and goals come to life.

It is an honor to serve this amazing community, and we are so proud of each GiGi's Playhouse NYC participant and love seeing them grow every year. 2019 was an incredible year! We said "see you later" to our past staff members of the last 3 years and invited in some new amazing faces to the Playhouse team! We launched some new programs and increased the number of individuals and families served. We also continued with 5 weeks of summer programming keeping GiGi's Playhouse NYC's programs running almost entirely year-round! Our GiGiPHNYC Community Chorus performed several times this year including at the NDSS Gala, our 7th annual "i have a Voice" Gala and other community events all over the city.

We are also so thrilled to say that our programs keep continuing to grow. In 2019, we welcomed 121 new families to our community. Overall, we had nearly 6,400 hours of program participation. 234 unique families enjoyed GiGi's NYC's programs, with even more at events and parties. As we enter our 8th year, we are grateful to be fully embraced by our community. We run on your belief in our mission. From all of us at GiGi's Playhouse NYC, we send our sincere thank you to all of our volunteers, Board members, community partners, donors and of course our incredible families. Together we are changing New York City's perception of individuals with Down syndrome. At GiGi's NYC, we challenge our kids to achieve their "Best of All", asking them to be a little better today than they were yesterday. As an organization, we have the same approach. With your help, the future is limitless for GiGi's Playhouse NYC!

Thank you!



Benny Kaufman  
Programs Director



Katie Momenie  
Operations Coordinator



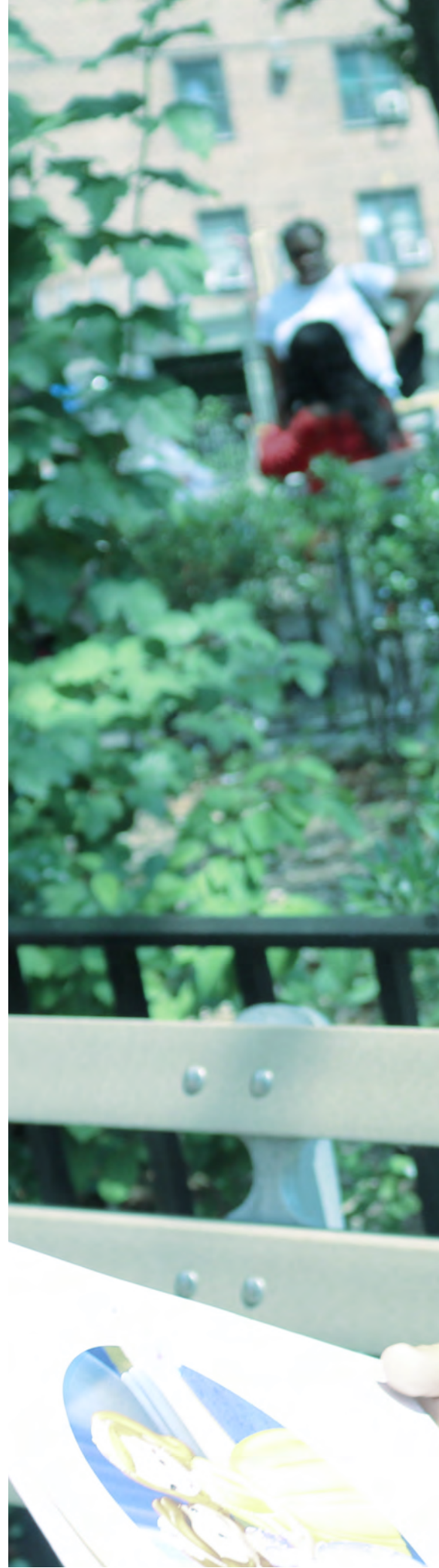
Leisha Cason  
Development Associate





## Our Programs

GiGi's Playhouse NYC provides therapeutic, educational, social and creative arts enrichment programs for individuals with Down syndrome of all ages. From pre-natal diagnosis through life skills for our adults, we make a commitment to be there for the lifetimes of our families. Each program is purposeful, progressive and always delivered at no cost to Playhouse families.









# Spring-Fall Programs

## **Busy Bodies**

Playgroup to meet new friends, explore and share current and emerging abilities. Ages 2+.

## **Leaps & Bounds**

Music and movement program where kids sing, dance, run obstacle courses and more. Ages 3-5.

## **LMNOP**

“Language, Music ‘N’ Our Peeps” incorporates sign language, communication tools and music. Ages 3-6.

## **I-on-I Literacy Tutoring**

Builds a foundation in sight word recognition, vocabulary, comprehension, phonics and articulation. Ages 3+.

## **Kids Club**

Develops social skills, fine and gross motor skills through structured active and fun games that promote lasting friendships and connections with peers. Ages 8-12.

## **Karate**

Sport fundamentals while working on team work, fitness, attention and self control. Ages 6+.

## **GiGiFIT**

Teens and adults build a foundation of fitness while learning healthy lifestyles. Ages 13+.



### **TeenTastic**

Experience the fun of being a teenager, practice social skills and build friendships. Ages 13-19.

### **Bowling Buds**

Bowling activity/outing for adults of all abilities. Ages 18+.

### **Fantastic Friends**

Adult social activity to practice social skills and build friendships. Ages 21+.

### **Gratitude Art Committee**

Adults give back to the Playhouse through their art! Ages 21+.

### **“we have a Voice” Community Chorus**

Is comprised of those with Down syndrome, family and friends. Participants develop and reinforce skills such as body awareness, listening, vocal production, diction and memorization. All ages.

### **Summer Clubhouse**

Kids engage in activities to develop motor skills, social and language development through fitness, arts, cooking and literacy activities. Ages 4-10.

### **Summer Adventures**

Teens explore NYC and their independence with a one-to-one volunteer. Ages 13-19.

### **Summer Horizons**

Adults explore NYC and practice life skills and independence with a one-to-one volunteer. Ages 21+.



# Summer Programs

## Summer Clubhouse

Kids engage in activities to develop motor skills, social and language development through fitness, arts, cooking and literacy activities. Ages 4-10.



## Summer Adventures

Teens explore NYC and their independence with a one-to-one volunteer. Ages 11-19.



## Summer Horizons

Adults explore NYC and practice life skills and independence with a one-to-one volunteer. Ages 20+.



## Special Recognition

### Invest for Children

Launched original Summer Clubhouse and Summer Adventures in 2016 and sponsored these programs for the fourth year in 2019.

### John's Crazy Socks

Launched first Adult Summer Program, Summer Horizons in 2018 and sponsored this program again in 2019.

### Hard Rock Café

Their generosity allowed over 100 of our teen and adult summer program participants and volunteers to attend two Broadway shows.







# Program Spotlights



## GiGiFIT



A fitness program with a wellness-based curriculum designed specifically for the physiology of those with Down syndrome. GiGiFIT addresses common issues of hip stability, low-muscle tone and balance. This program has reached over 40 participants this year and focuses on coordination and nutrition.

One parent reflected, *“Through GiGiFit at GiGi’s Playhouse NYC, I have seen my daughter grow as an athlete and a leader.”*

100%

of participants registered for the next round of GiGiFIT sessions.







## “we have a Voice” Community Chorus

*This achievement program is comprised of individuals with Down syndrome, family members and friends. Skills developed and reinforced include body awareness, listening, vocal production, diction and memorization. Performing builds confidence, self-esteem and resiliency - providing the satisfaction that comes from working together as a team.*

*They debuted at the NDSS 40th Anniversary Gala; opening the evening and mesmerizing the 400 member audience to standing ovation. The pride they felt that night will stay with them forever. They followed by opening our 2019 “i have a Voice” Gala. They sang at the grand opening of our neighbor Positive Exposure’s new space, and closed 2019 by singing carols across Harlem during the holiday season.*

*Conducted by Broadway’s Laurie Gamache,  
Cassie in the original production of Chorus Line.*





## Generation G

As part of the GiGi's Playhouse network, we are advancing a vision of global acceptance for all through Generation G: a campaign for greater acceptance and lasting social change.

Dedicated locations, purposeful programs offered at no cost and high accountability do not guarantee long-term acceptance. Over the last 6 years, GiGi's Playhouse NYC has made significant progress and impact in supporting individuals with Down syndrome, yet we have only scratched the surface. Still, new parents may not be receiving the positive encouragement they need from medical professionals. Young people with Down syndrome may experience discrimination at school and on social media. Qualified adults with Down syndrome often can't access jobs.



There is still much more to accomplish.



**Generation G has a  
very simple philosophy:  
make a conscious  
decision to be better  
every day.**



Be Accepting.  
Be Generous.  
Be Kind.

**#GenerationG**





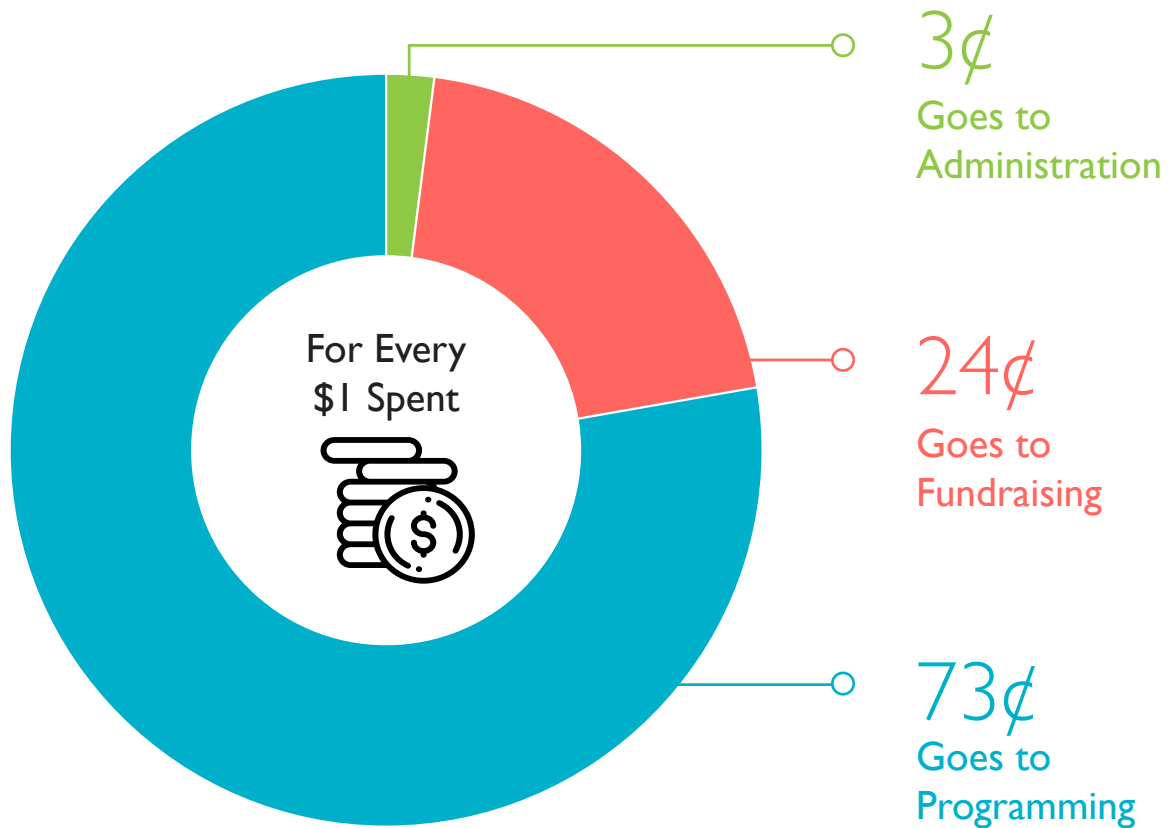


**“GiGi’s Playhouse has provided a platform for me and my family to enjoy with other families with similar journeys. The support system is awesome. I appreciate the commitment of each staff member/volunteer that dedicates their time to impact each child. God bless everyone involved with making GiGi’s an awesome successful organization.”**

**-Mark Anderson, Playhouse Parent**



# Financial Overview



# 97%

of our annual expenditures go directly to programming and fundraising that benefit our community. In 2019, we are focusing on increased grant opportunities and expanding our fundraising streams.





# Thank You Donors & Supporters

GiGi's Playhouse NYC is entirely funded by individual and corporate donations and foundation support.

## Founders Circle

A 3-year commitment of \$5,000 annually is what sparked our growth. These seed funds continue to help us grow.

Tracy Nixon

Andrew & Debbie Morris

Tom & JoAnn Fogarty

Benno & Evelyn Ansbacher

Jonathan & Rosemary Ansbacher

Gaurang & Heather Trivedi

Eric & Becky Fogarty

Matthew & Lauren Fogarty

Gretchen Hayes

Jean Sullivan & Richard Cane

Mitch Rubin & Audra Zuckerman

Invest for children

### \$20,000+

Benno Ansbacher

Andrew & Debbie Morris

Tracy Nixon

### \$10,000+

Climatec, LLC

Invest for children

Platinum Maintenance Services Corporation

Société Générale

The Wasily Family Foundation

### \$5,000+

Jonathan & Rosemary Ansbacher

Ruth Erickson & Paul Goularte

Sara Gall

GiGi's Playhouse NYC Associate Board

Hard Rock Café

Howard Gilman Foundation

John's Crazy Socks

The LiRo Group

Mary McMahon

Palo Alto Network's Smile Council

Verisk Analytics ISO



### \$2,500+

Billy Rose Foundation  
Deutsche Bank Americas Foundation  
Adam Hait & Sarah Fairchild  
Eugenia Kaye  
Marsh & McLennan Companies  
Jessica & Michael Nahmias  
National Down Syndrome Society (NDSS)  
Network for Good  
Edward & Adela Palmer  
Jane Providenti  
Merideth Vieira  
XL Specialty Insurance

### \$1000+

Wendy White Baxter  
Johanna De los Santos  
Kirsten DeBear  
Jean-Francois Despoux & Guylaine Amyot  
Patricia Donini  
Carol Falcinelli  
Brian Hallowell  
Gretchen Hayes  
Sam Herzfeld  
Kyle Laudadio  
Anthony Providenti  
Gail U. Reed  
Richard W. Rupp Foundation  
Robert A.M. Stern Architects  
Frank Sawyer  
Mary Haverhals Stuart  
Margaret Suero  
The Trautschold Family Foundation, Inc.  
Janice Tyson  
Carin Whitaker

### \$500+

Jake Abraham & Katie Sammis  
Kurt Abrams  
Rachel Adams & Jon Connolly  
Beazly Group  
Benevity  
Dorothee Nagy Bucquet  
Mick Carnevale  
Gabriella Citrin  
Jean Marie Cho  
Louise Contino  
Mark Cronin & John Cronin  
Hurley Doddy  
Hakan Ergulec  
Michael Fanelli  
Fidelity Charitable  
Ann Kelly & Renaud Verlaque  
Richard Hara & Kumiko Ashino  
Kutalmis Koyuncu  
Alex Lamis & Holly Horn  
Michelle Lopez  
Melot Lorch  
Elizabeth Mandel  
Darius Mayfield & Saudia Ally  
Karen McDonald  
Roy Nada & Veronica Labarca  
Christine Okike  
Odyssey Reinsurance Company  
Vitali Penso & Rachel Kimmel  
Karen Providenti  
Elizabeth Scheel  
Derek Still  
James & Jill Still  
Marilyn Sugarman  
Richard & Jean Sullivan  
Lucy Weir  
Jonathan Wilkerson  
Buddy & Holly Young



## Special Events

The 2nd Annual Fashion Show presented by Bloomingdale's is another demonstration of how GiGi's Playhouse NYC is continuing to change the way people perceive Down syndrome through our community's achievements and growing self-confidence!

### Silver Sponsor:

Gail U. Reed, CPA, PC

### Bronze Sponsor:

Marsh & McLennan Companies

### After Party Sponsor:

Bloom's Tavern

### Fashion Show Supporters:

Elaine Cyrus

DJ BVNKS

Gary G. Hamilton / AP

Michael Kusher Photography

Thes Hansen

PARFUMS de MARLY







**“This fashion show was a dream that I didn’t know I had for her. She’s a superstar and I cannot wait for the world to see her own that runway!”**

Celine Robinson, Playhouse Parent



## Gratitude Art Committee

**Gratitude Art Committee** is comprised of adults with Down syndrome. They meet weekly, volunteering their time and talent creating art to share with our volunteers, investors and the world — showing our gratitude.

**Société Générale** produced an Art Show in celebration of October's Diversity and Down Syndrome Awareness Month. The art show was entirely comprised of works created by our Gratitude artists. Through a generous donation, Société Générale became the first sponsor, launching our Corporate Gratitude Art Project.

**AIG** along with their New York DisAbilities and Allies ERG, with participation from The Frick Collection, held their 2nd Annual Art Show honoring the talents of the differently abled. Five works created by artists from our Gratitude Art Committee were featured.



# Peanut Butter Falcon Screening

In Partnership with Reelabilities at JCC Manhattan



The Peanut Butter Falcon is a much anticipated new film that features an actor with Down syndrome going on the adventure of a life time with an unlikely pal.



The Peanut Butter Falcon is an adventure story set in the world of a modern Mark Twain that begins when Zak, a young man with Down syndrome, runs away from the nursing home where he lives to chase his dream of becoming a professional wrestler and attending the wrestling school of The Salt Water Redneck. Through circumstances beyond their control Tyler (Shia LaBeouf), a small time outlaw on the run, becomes Zak's unlikely coach and ally. Together they wind through deltas, elude capture, drink whisky, find God, catch fish, and convince Eleanor, a kind nursing home employee with a story of her own to join them on their journey.



# “i have a Voice” 2019 Gala

Trio Oh La La kicked off festivities during the cocktail hour performing their unique brand of jazz. Our very own ‘we have a Voice” Community Chorus conducted by Broadway’s Laurie Gamache started the evening’s program by bringing the audience together with “Zip A Dee Doo Dah”, followed by “True Colors” and had the entire crowd on their feet for an uplifting and powerful performance of “This Is Me”. A surprise arrived via video from “This Is Me” writer, Benj Pasek who shared his enthusiasm for GiGi’s Playhouse NYC’s impact in the community. The audience was treated to our “Founders Video”, celebrating seven years of pictures from our community accompanied by the song “We Are Awake” from SuperYou the Musical, music and lyrics by Lourds Lane. The night closed with everyone dancing to the sounds of celebrity DJ, DJ Yoshi, official DJ for BIG 10 Championships, Under Armour and DC Fight Night.

## Sponsors



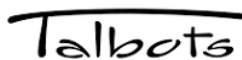
## Partners







# Resources and Community Partners









**“GiGi’s Playhouse fills your heart with joy. The staff, families and volunteers are together a family. You cannot help but smile whenever you walk through the door.”**

- Simone Nicholls, Volunteer  
*Leaps & Bounds.*













# Growing Our Future



## Who Helps Us Grow?

### Volunteers are the backbone of the Playhouse.

We rely on the dedication, talent, and expertise of a core group of volunteers and staff to deliver our programs. We ask for a three-month commitment; the majority of our core volunteers have served for over two years.

## How Will We Grow?

### Expand our satellite programs

Through partnerships and in-kind donations, GiGi's Playhouse NYC will provide programs in all five boroughs of New York City. We are currently seeking partnerships in Queens, Staten Island and the Bronx.

### Fundraising Needs

GiGi's Playhouse NYC fully survives on the generosity of investors. Donations provide children and adults with Down syndrome, lifelong access to no-cost purposeful programs without barriers or conditions. Every program dollar invested enriches lives and supplements many resources families seek beyond the Playhouse.

Donations also advance our vision for global acceptance. GiGi's Playhouse NYC is not just for our participants and families, it's for the whole community. Every supporter creates a widening circle of dialog regarding our participants' potential. As the circle of communication, engagement and investment expands; so does lasting acceptance.

# Take Action



Help GiGi's Playhouse NYC deliver lasting impact.



## ENGAGE

- Host a private donor cultivation event.
- Choose GiGi's Playhouse NYC as the primary beneficiary of your employee giving, matching gift and volunteer match campaigns.
- Include GiGi's Playhouse NYC in your estate.



## SHARE

- Market and publicize GiGi's Playhouse NYC on your corporate websites and social media pages.
- Donate broadcast and digital advertising to help GiGi's Playhouse NYC reach more families and establish additional satellite programs.
- Advance the Generation G Acceptance Campaign as a national promotional partner.
- Join GiGi's Playhouse NYC in getting our elected officials to demonstrate their commitment to the Down syndrome community by joining the Congressional Task Force on Down syndrome. Call, meet, inform your elected leaders.
- Support us with every Amazon purchase you make by shopping through [smile.amazon.com/](https://smile.amazon.com/) and select GiGi's Playhouse - NYC. Amazon will donate 0.5% of the purchase price to GiGi's Playhouse NYC.



## PARTNER

- Become a sponsor of GiGi's Playhouse NYC's programs and events.
- Create an endowment or donor advised fund to provide sustainable support for Playhouse families and programs.





# Volunteers



Abigail Padilla  
Abigail Calumpit  
Alice Momenee  
Alma Mejia  
Alyssa Sherman  
Amelia Fay  
Ana Huerta  
Andie Amit  
Angie Zeng  
Angie Chang  
Anna Huerta  
Annie Dailey  
Anu Sharma  
Arkadiy Stepanchuk  
Azad Ally  
Beth Wrubleski  
Bisma Masoud  
Brideen Peel  
Britni Allen  
Brooke Bloom  
Caitlin Apollo  
Camille Burton  
Caroline Nouhan  
Catherine Kerner  
Cindy Chang  
Claire Kuhn  
Claire Lashinger  
Claudia Castillo  
Clement Perrot  
Cole McLollum  
Courtney Orange  
Cynthia Ung

Damilola Banwo  
Dani Temares  
Danielle Temares  
Darius Mayfield  
David Yesenia  
David Mannes  
Denise Almodovor  
Diana Hernandez  
Diana Fox  
Dilip Chetri  
Eddy Huang  
Elizabeth Morris  
Ella Villaeorca  
Erin Ruth  
Esti Neuhar  
Evie Blinder  
Fadwa Jaouane  
Francesca Monaco  
Gary McCann  
Gina Cimino  
Giselle Molina  
Gizem Kurtbolat  
Grace Lorch  
Greg Frederick  
Gregorio Mount  
Hailey Wolf  
Hannah DaSilva  
Hannah Providenti  
Jacqueline Black  
Jane Cohen  
Jason Buckingham  
Jen Shapiro

Jenna Masoud  
Jennifer Jackson  
Jenny Yuen  
Jeremy Reyes  
Jessica Zhao  
Jessica Valdivia  
Julian Zhao  
Justine Selekman  
Karen Hsieh  
Karina Royzen  
Karissa Braden  
Katherine Luskin  
Kayla Sheeger  
Kelley Chang  
Kelly Andrien  
Kelly Haas  
Kelly Zeng  
Kelsey Craig  
Keri Allen, M.D.  
Kimberly Holder  
Kristina Lagoda  
Laura Weinstein  
Laura Schmidt  
Lauren Veltre  
Laurence Agenor  
Laurie Gamache  
Lena Fera  
Lena Ham  
Lenny Zhang  
Linda Barnes  
Lisa Pagan-Vega  
Lizzy Atlas



Luz Rivera  
Malcolm Hallett  
Marisa Vomvos  
Martyna Okuniewska  
Mary Dunne  
Mary Kuhn  
Maya Nadler  
MeenaTaneja  
Megan Geer  
Michael Pena  
Michaela Christenseh  
Miguel  
Mikaela Lim  
Milan Desamito  
Momiba Zabrocka  
Nadine Viegas  
Natalie Arias

Nazareth Battice  
Nicole Hallett  
Nora Gross  
Prisilla Fimin-Guyon  
Rachel Ross  
Rachel Oatis  
Rashi Taneja  
Reed Nurolino  
Rira Shimizu  
Ronald Sanchez  
Ronen Frank  
Ronit Karamchandani  
Sam Walter  
Sansara Mahtani  
Selena Gabrielle  
Shanna Fragen  
Shannon O'Neill Fonseca

Shoshana Jeselsohn  
Stefanie Ranagan  
Stephanie Walz  
Thelma Jones  
Tiffany Bowen  
Tiffany Ogburn  
Tishya Dua  
Tonian Lamont  
Tsai-Pei Shen  
Victoria Oliveira  
Vishnu Nair  
Wasif Hassan  
Wen-yi Lai  
Yasmin Milina  
Ying Zhou



# Boards and Staff

## Board of Directors

**Frank Sawyer**  
President

**Jane Providenti**  
Vice-President

**Roy Nada**  
Treasurer, Marketing Co-Chair

**Sharon Hart Fanelli**  
Secretary

**Adam Hait**  
Board Member

**Liza Galler**  
Board Member

**Margret Ditolla**  
Board Member

**Carol Falcinelli**  
Board Member

**Jenna Aidikoff**  
Development Co-Chair

**Ryan M. Brown**  
Development Co-Chair

**Saudia Ally**  
Gala Chair, Marketing Co-Chair

**Ruth Erickson**  
Governance Chair

**Gary McCann**  
Board Member

**Yamira Siu**  
Board Member

## Staff Members

**Benny Kaufman**  
Programs Director (Jan-Sep)

**Christine Cuppett**  
Programs Director (Sep-Mar'20)

**Katie Momenee**  
Operations Coordinator

**Leisha Cason**  
Development Associate

## Associate Board

The GiGi's Playhouse NYC Associate Board is comprised of young professionals who give generously of their time, talents, experience, and perspective, to create and conduct fund-raisers, raise awareness of GiGi's Playhouse and its programs and enhance the Playhouse's ability to provide exceptional programming to its community.

**Louise Contino** | VP Community Engagement  
Communications Strategist and Producer United Nations Development Program (UNDP) Nature for Development Program and Equator Initiative

**Janie Papernik** | Secretary  
Speech Language Pathologist and Director of Therapies Grades K-12 The IDEAL School of Manhattan

**Mary Gonzalez Sisson** | VP Membership Affairs  
Founder & CEO Dyer & Sparks

**Melissa Leeolou** | Events & Fundraising  
Clinical Research Associate Department of Pediatrics Memorial Sloan Kettering Cancer Center

**Eileen McClary** | Events & Fundraising  
Division Sales Manager Bloomingdale's

**Amanda Moore** | Events & Fundraising  
Sales Analyst Marsh USA, Inc.

**Brittany Doshi** | BoD Development Committee  
Managing Director, National Foundation Partnerships, Teach For America

**Khushboo Shah** | Community Engagement  
Population Health Data Analyst Coordinated Behavioral Care

**Michael Fanelli** | VP of Finance, Acting President  
Mergers and Acquisitions Tax Associate, RSM US LLP

**Kyle Laudadio** | VP of Comm. & Design  
Underwriter, Beazley Group

**Kimberly Osorio** | VP of Events & Fundraising  
Occupational Therapist, Memorial Sloan Kettering

**Puja Thomas** | Finance  
Tax Associate  
Development & Exempt Organizations, KPMG LLP

**Griffin Rohs**  
Consultant, Marsh USA

**Mallory Humphries**  
Communications Manager, enCourage Kids Foundation

**David Mannes** | **Associate Board Secretary**  
Teacher, The Ideal School







# A View of our Community











#GiGiPHNYC

(646) 801-7529

106 W 117th Street  
New York, NY 10026

[gigisplayhouse.org/newyork](http://gigisplayhouse.org/newyork)  
[nyc@gigisplayhouse.org](mailto:nyc@gigisplayhouse.org)

