

10
years

GiGi's Playhouse Nashville

welcomes you to the

i have a Voice
Gala & Auction

as we celebrate 10 years of
serving the Down syndrome community
of Middle Tennessee

Presented by



April 1, 2023 | 6 PM
City Winery, Nashville



Sadie Brett Boyer

- Funding CHD research
- Creating awareness
- Providing family support
- Celebrating the Down syndrome community

WWW.THEBRETTBOYERFOUNDATION.ORG

One of our favorite parts of our mission is celebrating the extraordinary, capable lives of our friends in the Down syndrome community.

*Thank you to Gi Gi's Playhouse
for all you do!*



The Brett Boyer Foundation

was founded in 2017 by Ellen and Bo Boyer following the loss of their 7 month-old daughter, Sadie Brett Boyer, to complications from CHD. Brett was a gift to all who knew and loved her, and her legacy shines on as we continue our mission of changing outcomes for other families and celebrating her life.

Welcome Guests,

Thank you for joining us as we celebrate GiGi's Playhouse Nashville's 10th anniversary serving the Down syndrome community of Middle Tennessee! For a decade we have been fulfilling a simple promise: that cost will never be a barrier to accessing the therapeutic and educational services our friends with Down syndrome need to thrive and grow into their full potential. This mission is made possible because of generous individuals like you and we are deeply grateful for your kindness and support.

Funds raised from tonight's gala are critical to ensuring GiGi's is able to provide vital services and life-changing programs for our community. Programs that promote education, independence, and job skills. Programs that not just support my step-son, Sam, but welcome him as he is, celebrate his unique abilities, and encourage him to live his very best life.

So tonight, please know that you have had a tremendous impact on your friends with Down syndrome. You've helped create a place where whole families like mine are celebrated and supported through all stages of life. And we could not be more grateful.

Thank you!

Jenée Farrell

Volunteer Gala Chair



**LKQ is proud to support GiGi's
Playhouse Nashville for their 11th
Annual "I have a Voice" Gala & Auction!**

Visit us online at LKQCorp.com

LKQ
Keeping you moving

**GiGi's
Playhouse™**
Down Syndrome Achievement Centers
educate. inspire. believe.

Gala Attendants

Savannah Anderson, Andrew Donaldson,
Clayton Huffman, Taylor Krieg, Tori McMahon,
Sam Nafzger, Ryan Pittman, and Bethany Stineman

At GiGi's Playhouse Nashville, we make a lifetime commitment to support individuals with Down syndrome of ALL ages and help them achieve their "Best of All." Our adult programs focus on vocational, communication, fitness, and social skills to increase confidence and independence. We are so pleased that a number of our teen and adult participants are joining us as Gala Attendants to help welcome you to the event tonight. Please take the time to mingle with them and learn their favorite things about GiGi's!



Dr. Elizabeth Bailes - Pediatrics
1622 Westgate Circle, 1st Floor
Brentwood, TN 37027
629-255-2094



Schedule of Events

6:00

Cocktail Reception & Silent Auction
With music by Amanda Baker Browning
Silent auction will close at 8:00 PM

7:15

Welcome Announcements
Shane McCarrell, Emcee

Playhouse Introduction

Presented by Board President Gerd Peters
and GiGi's Ambassador Bethany Stineman

7:45

Dinner

Gloria & Cindy Knoch Volunteer Spirit Award

Presented by Tutoring Coordinator Amy Hirt
and GiGi's Ambassador Ryan Pittman

Dessert

Live Auction

Keynote Speech

Introduction by Founding/Current Board Member
Tiffany Wenzler
Presented by Kim Coure, Founding Board Member
and GiGi's Parent

I Have a Voice

An opportunity to make a gift to support the
voices of our GiGi's participants

Closing Remarks

Volunteer Gala Chair Jenée Farrell with GiGi's
Ambassadors Ryan Pittman and Bethany Stineman

9:30

Check Out Opens and Dancing Begins

Meet Our 2023 Ambassadors

The goal of GiGi's Ambassador Program is to help our ambassadors develop their public-speaking skills, confidence, and ability to advocate, while serving as our GiGi's spokespersons for the year.



Ryan Pittman

Ryan is 31 years old and lives in Franklin, TN. Ryan has been coming to programs at GiGi's for 7 years and enjoys attending EPIC, Fantastic Friends, and CrossFit. Ryan has just moved into a condominium where he lives independently and takes the Franklin Transit to work. You can see him working hard at both Brixx and Taziki's in Franklin. In his free time, Ryan enjoys spending time with his family (he is the favorite uncle to four nieces and nephews) and traveling on mission trips. Ryan relaxes with video games and listening to Christian music.

Bethany Stineman

Bethany is 22 years old and lives in Nolensville, TN. She loves all the classes she has taken at GiGi's including Yoga, EPIC, and Fantastic Friends. Bethany loves to travel, watch football, and participate in Special Olympics. She plays basketball, flag football, bowling, and track and field. She won two gold medals in the Special Olympics USA games in June 2022.

Our ambassadors are doing an amazing job representing GiGi's this year. Thank you for supporting them!



Proud to support GiGi's Playhouse

naviHealth is improving the
health care experience for seniors.

Learn more at naviHealth.com.



Sponsors

Presenting Sponsor

The Brett Boyer Foundation

Gold Sponsors

Tracey and Jim Anisi / My Salon Suite
LKQ

Silver Sponsors

Erie Insurance
HCA Healthcare / TriStar Health
Innova Solutions, Inc.
naviHealth, Inc.

Bronze Sponsors

Dr. Elizabeth and Shawn Bailes / Heritage Medical Associates
Ludi, Inc.
Pinnacle Financial Partners

Friends & Family Sponsors

Advance Financial Foundation
Ascend Federal Credit Union
Hiller Plumbing, Heating, Cooling & Electrical
Dr. Molly Hood / Pediatric Associates of Franklin
JAN-PRO Cleaning & Disinfecting
Lisa's Hair Apothecary
MTR (Middle Tennessee Reprographics)
Publix Super Markets Charities
Redstone Federal Credit Union

In-Kind Sponsors

Alcohol: Lipman Brothers and R.S. Lipman Company
Graphic Design: Kathy Hirt
Marketing Partner: Lighting 100
Floral: LMA Designs
Photography: Collins & Collins Wedding Photography,
Tausha Dickinson, and Carolanna Hirt
Videography: Morgan Taylor Photography



**we're here
for you**

An insurance policy is more than a piece of paper—it's a promise to be there when you need us, wherever and whenever. That's why Erie Insurance is proud to sponsor the GiGi's Playhouse 2022 Gala. For over 95 years, ERIE has been supporting the communities we live and work in by treating people right and protecting their future.

 Erie Insurance®
Above all in SERVICE™ since 1925

CMS149

Thank you to our cocktail hour singer:

Amanda Baker Browning



Amanda was born and raised in Charleston, SC, and graduated from the University of South Carolina. After performing in a local band for a few years, she made the move to Los Angeles to pursue an acting career. She is most known for her roles as Jolene Crowell on General Hospital and Babe Chandler on All My Children. She has many other credits in TV, film, and commercials and currently teaches online acting classes for the company Work With Working Actors. She's also a part of The Bridge's worship team in Spring Hill, TN.

Down Syndrome Today

One in 691 live births results in a Down syndrome diagnosis. There are 450,000 individuals with Down syndrome living in the United States. Including parents and siblings, over 2 million people are impacted by this diagnosis every single day. Therefore, improving the lives of those WITH Down syndrome as well as those INFLUENCED by Down syndrome is truly an urgent need.

GiGi's Playhouse Helps Families

GiGi's Playhouse is an international network of Down Syndrome Achievement Centers, with over 50+ brick and mortar locations across the United States and Mexico and 200+ inquiries to start new locations all over the world. Across our network, we provide FREE, life-changing therapeutic, educational, and career training programs for 30,000+ individuals of all ages.

GiGi's Playhouse Nashville

GiGi's Playhouse Nashville opened its doors in November 2013. It is a physical place where people can connect, meet, and be accepted just as they are. We support individuals with Down syndrome and their families through free programming tailored to their learning style. We encourage participants to give their best effort, and we always celebrate individual progressions and achievements. We are tremendously proud of how far we've come over the past ten years—and we've got even bigger dreams for our future.



Playhouse Programs

GiGi's Playhouse Nashville makes a lifelong commitment to families to provide free, purposeful programs that are designed to holistically empower those with Down syndrome to thrive and reach their "Best of All."

GiGi's offers dozens of therapeutic-based programs that support fine and gross motor skills, speech and language abilities, health and fitness, and other key areas of development.



GiGi's offers goal-oriented programs for teens and adults that focus on the development of confidence, real-world skills, health and wellness, and career skills.

GiGi's offers one-on-one tutoring in literacy and math to increase success in school, using best practices that address the unique learning needs of students with Down syndrome.

GiGi's breaks down barriers and changes the way the world sees Down syndrome by creating opportunities and fostering acceptance through our international network.

Proud supporters of GiGi's Playhouse!

dsamt
Down Syndrome Association of Middle Tennessee
somethingextra.org

LUDI
Physician Relationships. Simplified.

We make it easier for hospitals to pay their physicians

Ludi is proud to partner with GiGi's Playhouse & the 2023 "I Have a Voice" Gala

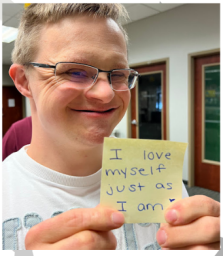
WWW.LUDIINC.COM

2022 Highlights

- Provided FREE services to 149 individuals with Down syndrome and 226 additional family members, who logged 3,030 participation hours
- Provided 350 hours of math and literacy tutoring
- Hosted 127 volunteers who generously donated more than 2,000 service hours
- Remodeled our kitchen, allowing participants to be able to emulate what it is like cooking in their home kitchens
- Continued our outreach and providing programs for our families in Sumner County
- Received recognition at the annual national conference for our efforts in donation processing and data management and program implementation
- Contributed in helping launch the network-wide single-use contact data model, making our check-in process smoother; served on the Education Excellence Committee helping to ramp up the tutoring programs network-wide

Why Your Support Matters

Your donations to GiGi's Playhouse ensure that cost will never be a barrier for families to access life-changing educational, therapeutic, and career development programs for our friends with Down syndrome. Thank you for making a difference!



Tracey and Jim Anisi
with

MY SALON
Suite®

are proud to support

GiGi's
PLAYHOUSE™

Down Syndrome Achievement Centers
educate. inspire. believe.

Nashville, TN



Gloria & Cindy Knoch Award

The Gloria & Cindy Knoch Volunteer Spirit Award
honors our founding benefactors
Gloria Knoch, her daughter Cindy,
and the entire Knoch family.



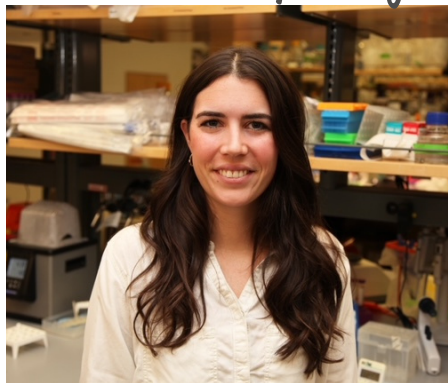
Gloria Knoch raised eight children—one of whom was Cindy, born in 1953 with Down syndrome. In 1953, there were very few, if any, resources for children with Down syndrome. Doctors recommended that Gloria institutionalize Cindy. Instead, Gloria and her husband brought Cindy home and into their loving family.

Despite the lack of resources for her child, Gloria was a pioneer and began a reading group for children with Down syndrome in her home. The family was not wealthy; despite that, Gloria managed to set aside money for Cindy's future. Sadly, Cindy passed away before Gloria. Upon Gloria's passing, her family wanted to do something that would honor their mother's courage and commitment to supporting and educating her daughter.

The family chose to honor their mother's legacy by giving to the newly opened GiGi's Playhouse Nashville. They recognized that our organization strives to help individuals with Down syndrome achieve to their fullest potential, which is everything that Gloria wanted for Cindy.

The Gloria & Cindy Knoch Volunteer Spirit Award embodies Gloria's giving spirit and her belief that her daughter Cindy could achieve great things if she was given access to the tools and encouragement she needed in order to be successful. We are pleased to award it to the volunteer of the year for GiGi's Playhouse Nashville, whose giving spirit has greatly impacted our participants.

Volunteer Spotlight: Lindsey Guerin



Having strong, consistent volunteers is imperative to the success of GiGi's Playhouse Nashville. We are so thankful for Lindsey Guerin and her dedication to tutoring our participants in Literacy and Math.

Lindsey is from Wisconsin and came to Nashville to attend graduate school at Vanderbilt University. She is working on her PhD in Biochemistry with her study focused on Developmental Genetics and Neuro Development. Her desire to follow this path of study began when she was in high school and she enjoyed her time of being a peer support to students in the special education program. Lindsey's interest strengthened when she had an internship in college researching Down syndrome, and we have been the recipient of her talented and generous spirit.

Over the past five years, Lindsey has given almost 200 volunteer hours to our tutoring program. She has consistently given her time to our families and has shown an amazing ability to adapt to each student's unique learning style. "Every participant is different and I love figuring out the best way to connect and help them learn." Lindsey completely understands that a large part of our tutoring program is working on communication with our participants. She shared, "I have learned so much about communication from tutoring at GiGi's. Every person communicates differently, and we just need to pay attention and take the time to meet them where they are."

Lindsey's dedication is changing the world for her tutoring students. GiGi's Playhouse Nashville is blessed to have her as a valuable volunteer. We are so pleased to award her the "Gloria and Cindy Knoch Volunteer Spirit Award" and thank her for all that she does for our families.

A celebratory graphic for GiGi's Playhouse Nashville's 10th anniversary. It features a central image of a young child with dark hair, smiling and showing hands painted with colorful paint (red, yellow, green, blue, pink). The child is wearing a light pink hoodie. Surrounding the child are decorative elements: a blue and yellow ribbon, a red heart, a blue heart, and a yellow heart. In the top left corner is the 'innova SOLUTIONS' logo. In the top right corner is the 'GiGi's Playhouse' logo with the tagline 'Down Syndrome Achievement Centers educate. inspire. believe.' Below the child image, the text 'Empowering Lives and Inspiring Change' is written in a large, bold, dark blue font. Underneath that, 'Happy 10th Anniversary' is written in a smaller font, followed by 'GiGi's Nashville' in a large, bold, white font. Below this, a message reads 'Thank you for making the world a better place for people with Down syndrome and their extended families.' followed by a small white arrow pointing down. At the bottom, 'A Proud Supporter!' is written in a large, bold, orange font. The 'innova SOLUTIONS' logo is also present at the bottom center. The entire graphic is framed by a thin yellow border and a thick blue border at the bottom.

- Board of Managers -

Valerie Bayham

Gerd Peters

Daniel Cage

Sharon Sabol

Chet Danto

Melissa Wenger

Kevin Heath

Tiffany Wenzler

Sean Farrell

Emily Whitson

Katie Ingram

Courtney Wright

- Playhouse Staff -

Emma Fleet, Operations Coordinator

Amy Hirt, Tutoring Coordinator

Carolanna Hirt, Programs Coordinator

Hayley Maurer, Sumner County Coordinator

- Gala Committee -

Lisa Anderson

Hayley Maurer

Jim and Tracey Anisi

Liz McKell

Angie Atema

Tara Mullaney

Tatianna Balis

Meredith Oritt

Valerie Bayham

Lavanya Reddy

Dana Bythewood

Paschia Smith

Jenée & Sean Farrell

Gerd Peters

Emma Fleet

Rachel Pugliese

Amy Hirt

Sharon Sabol

Carolanna Hirt

Tiffany Wenzler

Graeme & Clayton Huffman

Emily & Brad Whitson

Katie Ingram

Sammy Wu

- Executive Advisory Council -

Tracey & Jim Anisi, Lisa Bellin & Evelio Rodriguez,

Ellen & Bo Boyer, Kim & Richard Coure,

Rachel & Nicholas Howald, Lori & Jason Stacy

**For parents
with little
patients.**



24/7 answers, advice, appointments
Ask • A • Nurse 615.514.0757

You expect the very best when your child is sick or injured. That's why our pediatric ER is open 24/7 with board-certified physicians who are dedicated to treating your entire family with care and compassion. Our top priority is ensuring our littlest patients receive the best emergency care.

A Very Special Thank You

We want to extend our gratitude to our awesome adult participants and their families for helping to create the beautiful floral centerpieces for tonight's event and which were generously donated by LMA Designs. Tonight's floral centerpieces are available for guests to take home for a \$20 (large vases) or \$10 (small) donation through OneCause.



We would also like to extend a very special thank you to the following people for their support:

- **Amanda Baker Browning** for her vocal stylings.
- **Shane McCarrell** for emceeing tonight's gala.
- **Kim Coure** for sharing her family's story.
- Our **Staff** and **Volunteers** for making this night possible. Our spring interns **Liz McKell**, **Lavanya Reddy**, and **Sammy Wu** for working tirelessly behind the scenes on numerous parts of this evening's program.
- All of the **Individuals** and **Businesses** that donated items for our silent and live auctions.
- All of our **Sponsors** and **Donors** for providing the funds necessary to allow us to continue to offer free programming for our families.



Lipman

Delivering Distinctive Taste Since 1939.

TENNESSEE STATE PERMIT NO. 1

LIPMAN BROTHERS • R.S. LIPMAN COMPANY
2815 Brick Church Pike • Nashville, TN 37207 • 615-244-2230

Save the Date

June 4: Summer Programs Start

August 28: Golf Tournament

October: Down Syndrome
Awareness and Celebration
Month and our 3rd annual
Whiskey Raffle



**Achieve
Believe
Celebrate**

**GiGi's
Playhouse™**
Down Syndrome Achievement Centers
educate. inspire. believe.
Nashville, TN



Our Mission & Purpose

To change the way the world views
Down syndrome and to send a global
message of acceptance for all.

Our Vision

To see a world where individuals with Down
syndrome are accepted and embraced in their
families, schools, and communities.

Our Niche

We change lives through the consistent delivery of
free educational, therapeutic-based, and career
development programs for individuals with Down
syndrome, their families, and the community.

A lifetime commitment to families.

Thank you for joining us tonight!

GiGi's Playhouse Nashville
1724 Carothers Pkwy #400
Brentwood, TN 37027
(615) 370-1500

www.gigisplayhouse.org/nashville