

GiGi's Playhouse Presents

Generation



Gala

October 22, 2021

GiGi's
Playhouse™

Down Syndrome Achievement Centers
educate. inspire. believe

gigismadison.org

Thank You!

Dear GiGi's Playhouse Community,

Over the past few years, we have encountered many obstacles. As a cohesive and dedicated GiGi's community, we worked hard every day to do better than the day before. Each day, we continued to educate, inspire, and achieve. As a Playhouse, we saw first-hand how much our community believes in us and how resilient our families and participants truly are.

Tonight, we joyfully reunite in-person to celebrate our 5-year history and our many achievements. Thanks to the determination, hard work, and dedication of our volunteers, families, supporters, staff, and board of directors, together, we have come so far! From the grass roots efforts of start-up, to the development of top-notch operations and programs, to thriving during the Covid-19 pandemic, we have a lot to celebrate!

In 2013, Zane and Sue Torgrude, along with Patrick and Alison Ryan and many other impactful volunteers, set out on a quest to make a Madison playhouse a reality. The Madison playhouse successfully opened in 2016 and 5-years later, we passionately continue our mission to change the way the world views Down syndrome and to send a global message of acceptance for all. Tonight, we celebrate Zane's elevation to Founding Board President Emeritus, his enormous contribution to the success of GiGi's Playhouse Madison, and his impact on hundreds of families and lives.

I am so proud to be a part of the GiGi's Playhouse Madison community that continually shows that it is accepting, generous and kind. Here's to making many beautiful memories tonight and in the year to come. Cheers!



Julie Byrnes
Board President



Gala Schedule

- 6 :00 pm** Registration and Cocktail Hour
Silent Auction | Wine and Liquor Pull
- 7:00 pm** Heads and Tails Game
- Welcome
Emcee Leigh Mills from NBC15
- 7:15 pm** Dinner
- 8:15 pm** 5 Year Anniversary Celebration
- 8:20 pm** Kelly Antonson, Site Manager
- 8:25 pm** Julie Byrnes- Board President
- 8:30 pm** Honoring Founding Board President Emeritus,
Zane Torgrude
- 8:40 pm** Program Impact and Thank You Presentation
- 8:45 pm** Fund A Need
- 9:00 pm** Silent Auction Closes
- 9:00-11:00pm** DJ and Dancing

Thank You to our Gala Committee

This dedicated group of people have been working diligently for the past 5 months to make this evening a success!

Chelsea Sheedy

Camilla McKay

Julie Byrnes

Kimberly Arndt

Alexis Rhodes

Anita McKinley

Kelly Antonson

Special thanks to Eric Salzwedel from Intentional Purpose Consulting for his leadership and passion that helped bring all the moving pieces together!



Intentional
Purpose Consulting LLC

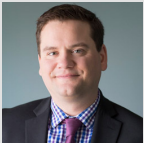
*Thank You to our
Board of Directors and
Site Manager*



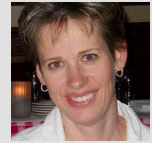
Julie Byrnes- President



Kimberly Arndt- Vice-
President



Keith Lehnerr- Treasurer



Amy Ulrich- Secretary/
Grant Writer



Zane Torgrude- Founding
Board President Emeritus



Tom Purnell- Board Member



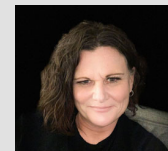
Chris England- Board Member



Jessica Abegglen-Board Member



Brett Bauch-Board Member



Kelly Antonson -Site Manager

Silent Auction Tips

HOW TO USE BIDPAL[®] MOBILE BIDDING

Use your smartphone to start bidding on items now.

HOW DO I FIND ITEMS?

You can find items by pressing any one of the buttons on the main menu, or by using the search bar to find a specific item or category.

HOW DO I BID ON AN ITEM?

1) Find the item. 2) Select it. 3) Press Bid.

WHERE ARE THE ITEMS I BID ON?

Items you have bid on can be found at:
Menu > Your Activity



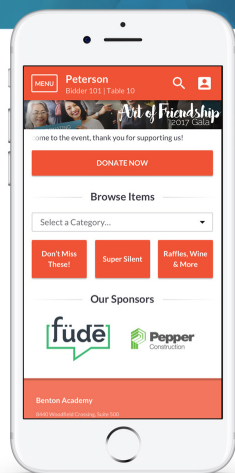
YOU ARE HIGH BIDDER



YOU HAVE BEEN OUTBID



ITEM HAS BEEN SOLD



CAN BIDPAL AUTOMATICALLY BID FOR ME?

After submitting a bid, you will be prompted to set a Max Bid. When you've been out bid, BidPal will automatically bid on your behalf up to the Max Bid amount you set using the bid increments provided.

WAS I OUTBID?

You'll receive a text message when you've been outbid. Alternatively, navigate to **Your Activity** to check the status of your bids.

BID **OFTEN**
and **HIGH!**

onecause[™]
POWERFUL FUNDRAISING SOLUTIONS

ONECAUSE.COM



Generation G:

A conscious decision to be
better every day.

Be Accepting

Be Generous

Be Kind

Take the pledge at:

iacceptyou.org

*Thank you to our
Platinum Sponsor*



**PROUD TO SPONSOR
GIGI'S PLAYHOUSE**

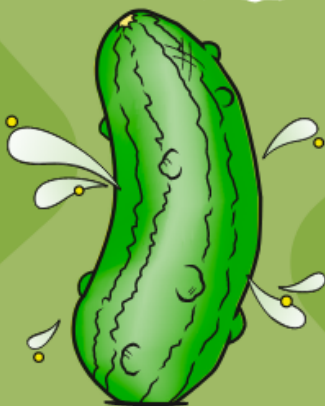
Michael Kittoe, Agent
334 Junction Rd, Madison
Bus: (608) 827-9788
mkittoe@amfam.com
Certified Agency in
Customer Excellence



American Family Mutual Insurance Company, S.I. & its Operating Companies,
American Family Insurance Company, 6000 American Parkway, Madison, WI 53783 007251 – Rev. 1/17

©2017 – 8811384

*Thank you to our
Friends of Gigi's Sponsors*



VAN HOLTEN'S

PROUD SUPPORTER OF
GIGI'S PLAYHOUSE



www.vanholtenpickles.com

*Thank you to our
Friends of GiGi's Sponsors*

LET'S GET *to* NEXT

At Park Bank, we're committed to getting everyone in our community to their **next**, and whatever comes after it, too.



PARK BANK



www.parkbank.com Member FDIC

*Thank you to our
Friends of GiGi's Sponsors*



**ONE
COMMUNITY
BANK**

***The ONE you can count on
for all of your banking needs***

OCB is a proud sponsor of Gigi's Playhouse

608-838-3141

Member
FDIC

www.onecommunity.bank

*Thank you to our
Friends of GiGi's Sponsors*

Tito's



Handmade

VODKA

AUSTIN ★ TEXAS

*Thank you to our
Silver Sponsors*

Hooper Foundation
is a proud sponsor of the
Generation G Gala
& **Gigi's Playhouse.**



HOOPER
Foundation

hoopercorp.com

4 LAKES
HANDYMAN

The logo features the text '4 LAKES' in blue above 'HANDYMAN' in large black letters. The 'H' is stylized with a ladder inside it. To the left is an orange house icon with a lightbulb inside, and to the right is a black hammer icon.

Thank you to our Silver Sponsors

we are

THANKFUL

We are so thankful for the community and programming that GiGi's Playhouse provides; and we look forward to being part of a movement that shows how incredible and worthy Addison and all people with Down syndrome are.

- The Berndt Family

proudly sponsored by



SOURCE DMK

Sourcing and manufacturing solutions for furniture and more, visit sourcedmk.com.



abegglen 
COUNSELING & CONSULTING

*Thank you to our
Silver Sponsors*

We help you see your
**financial
future.**

Klaas Financial Supports
Generation G



Be accepting.
Be generous.
Be kind.

 **KLAAS FINANCIAL**
608-442-5637 • klaasfinancial.com

GiGi's
PLAYHOUSE™

UWHealth



UnityPoint Health
Meriter

Quartz®

Thank you to our Bronze Sponsors

SUPPORTING
THE COMMUNITY
— IS A —
**GROUP
EFFORT**

Through our investments in education, economic stability, and emergency aid, we strive to foster equity so that everyone can achieve a brighter financial future.

We are #StrongerTogether

Learn more at cunamutual.com/about-us



CUNA Mutual Group is the marketing name for CUNA Mutual Holding Company, a mutual insurance holding company, its subsidiaries and affiliates.
CORP-1221083.4-0619-0721 © CUNA Mutual Group. All Rights Reserved.



*Thank you to our
Bronze Sponsors*



Aberdean is proud to support
GIGI's Playhouse
in the Memory of Patrick Ryan



ABERDEAN.COM | 608.204.9620



UBS

The Burish Group
UBS Financial Services Inc.

*Thank you to our
Bronze Sponsors*

Thank you to **Gigi's** Playhouse
Madison for the life, love, &
happiness you bring to our
community.



Complete Cleaning Solutions

De Vere

DeVereChemical.com
800-833-8373

**GA GOLDSTEIN
ADVISORS**

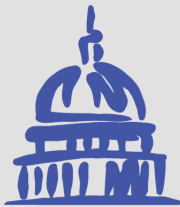
*Thank you to our
Bronze Sponsors*

Congratulations Zane Torgrude!

Your continued commitment
is an inspiration to all.



From all of us at
Custer Financial Services



DENTISTRY FOR
MADISON

» DR. JAY HAZEN «

*Thank you to our
Bronze Sponsors*



*Thank you to our
Bronze Sponsors*



*Thank you to our
Bronze Sponsors*



of South Central Wisconsin

**CONGRATULATIONS
ZANE!**

**- STEVE AND MARY
HOLZHAUER**

*Thank you to our
Bronze Sponsors*



**The Torgrude Family Fund-
Zane and Sue Torgrude**

*Thank you to our
Bronze Sponsors*

BE

**Bill's Earth
Services**

**ZANE, YOU'VE PLAYED A
POSITIVE ROLE IN SO
MANY LIVES.....
THANK YOU AND
CONGRATULATIONS!
- JOHN AND BECKY WONG**

*Thank you to our
Friends & Family Sponsors*

West Town
MONONA
TIRE / AUTO SERVICE CENTER


EGGERS
IMPRINTS
CUSTOM SCREEN PRINTING & EMBROIDERY
BROWN DEER | COLUMBUS


Monona BankTM

*Thank you to our
Friends & Family Sponsors*



NORTH STAR
Resource Group

Josh Evenson and Brian Hensen



Wilson Law Group, LLC

Your Life. Your Legacy. Your Way.™



*Thank you to our
Friends & Family Sponsors*



*Thank you to our
Friends & Family Sponsors*



Findorff
BUILDING & BEYOND

Generous Gifts

Costco

Madison Pediatric Dental and Orthodontics

Generous Contributions



Intentional
Purpose Consulting LLC



THE GROVE
• FLOWER FARM •
EST. 2013

Jeff Dostalek Photography

Generous Contributions



Members of WYSO



Thank you for your generosity!

Programs will always be free to families. However, they are not free for us to deliver.

Thank you for all of your support in helping children and adults by donating to these vital programs.

Acer Landscaping
Aeschbach Automotive
Charlie Berens
Amy Beth Design Studio
Anita Mckinley
Jerry and Marilyn Arndt
Lori Tomaselli
Bad Dog Frieda
Barre 3
Barre District

Bear and Bottle
Beef Butter BBQ
Benvenuto's Grill
Bishop's Bay County Club
Blain's Farm and Fleet
Bonefish Grill
Boulder's Climbing Gym
Braun Painting
Bridges Golf Course
Bruce Company
Budget Bicycle Center



Thank you for your generosity!

Cardinal Bounce

Carr Valley Cheese

Chick-Fil-A West

Chocolate Shoppe Ice Cream

CK Nails

Comedy on State

Costco

Crumbl Cookies

Culver's

Dan's Jenko Door Service

Delta Beer Lab

Diny's Diamonds

Doundrin's Distilling

Dragonfly Hot Yoga

Drumlin Ridge Winery

Eatstreet

Edge-O-Dells

Eric Salzawedel

Vonda Elmer

Festival Foods

Flick's Brew House

Foward Madison

Gayle Cox

Glass Nickel Pizza Co.



Thank you for your generosity!

Gracie's Doggie Delights

Grampa's Pizzeria

Colletley's Cookies

Grampa's Pizzeria

Great Dane Pub

Green Bay Packers

Harbor Athletic Club

Honeybee Cannabis

House on the Rock

Ian's Pizza

Isthmus Eye Care

Joey's Song

Josh Kosnick

Julia Grace Salon

Julie and Steve Brynes

Kara Hoerr Nutrition

Kelly Antonson

Kerri Meyer

Klein's Floral and Greenhouse

Klinke Cleaners

Kneaded Relief Day Spa

Knit Picks

Lucille

Thomas Kuckenbecker

Kwik Trip

Lois Kegel

Madison Angling Guide Service

Madison Capitols



Thank you for your generosity!

Madison Fly Fishing

Madison Originals

Madison Mallards

Madison Marriott West

Midtown Pub

Adam and Lindsay Miller

Muskellounge

New Glarus Brewing Co.

Neil's Liquor

Nitty Gritty

Noodles & Company

Off Broadway Drafthouse

Old Sugar Distillery

Patio Pleasures

Plans in Paradise

PRP Wine

Radiance Skin Therapy

Reb Robin

Rejuvenation Spa

RG Heating & Air

Russ Darrow Group

Schwoegler's Entertainment
Center

Heather Sheehan

Short Stack Eatery

Skipper Bud's

Spring Brook Golf Course

Sky Zone



Thank you for your generosity!

Stateline Distillery

Swad

Swim West Swim School

The Butterfly Club

The Diamond Center

The Healthy Place

The Jet Room-100 Dollar Burger

The Oaks Golf Course

Tito's Vodka

Tradition Market

Traeder Joe's

Van Holten's Pickle in a Pouch

Vintage Brewing Company

Von Fass- Delectable

Where It's At

Will Street Co-op

Woodman's

Working Draft

Yahara Bay Distillers

Immys Garage Door Service

Mason Tikkanen

Badger BNI

Dahl Family Chiropractic

Nicole Rowling Homes

Sean Pratt

Ganshert Nursery & Landscape

Lake Windsor County Club

Katie Meral

Metcalfe Markets

Heather Sheehan Photography

Tani Tandias Flamenco Dance

Nicole Rawling

Black Hawk Country Club

Home Depot

Jenny Enstrom

Laurence Hollihan

Joseph Muenich

Thank you for joining us!

**Thank you for joining us to celebrate
our Playhouse and the entire
Down syndrome community!**



GiGi's Playhouse Presents

Generation



Save the Date!

6th Annual Gala

October 2022

GiGi's
PLAYHOUSE™

Down Syndrome Achievement Centers
educate. inspire. believe

gigisplayhouse.org/madison/gala