

GiGiFIT

ACCEPTANCE CHALLENGE

A Physical and Social Movement for Acceptance



Fargo's GiGiFIT Acceptance Challenge

TEAM REGISTRATION GUIDE

June 5, 2021 | gigisplayhouse.org/fargo



Dear Playhouse Families,

GiGi's Playhouse Fargo is excited to be moving our annual Walk & Fest to June 5, 2021 to unite nationally for the GiGiFIT Acceptance Challenge - a Physical and Social MOVEment for Acceptance!

Join the MOVEment to change the way the world views Down syndrome and support GiGi's Playhouse Fargo! Assemble a team of your closest friends, neighbors, community groups, colleagues or family members to get out and MOVE! While all of our programs at GiGi's Playhouse are free to participants, they are not free to deliver. To continue changing perceptions and enriching lives for years to come, funding for our programs and campaigns are essential. By supporting GiGi's Playhouse as a team, you can be a true hero in the lives of children and adults with Down syndrome. Despite the uncertainty of the future, GiGi's has made a life-time commitment to providing quality programs, resources, and supports for the continued "Best of All" moments for our families! We need your help to reach our goal of \$75,000!

What can you do to support the GiGiFIT Acceptance Challenge? Please consider being an event sponsor and/or put a team of supporters together to join our MOVEment (and hopefully fundraise to support GiGi's in our community)! Enclosed are Fargo's local sponsorship levels or check out how to register your team online at www.gigisplayhouse.org/fargo.

MOVE for your health and MOVE for global acceptance for all on June 5, 2021! You can walk, run, lift, play, swim - whatever you choose - just get out and MOVE!

Thank you for your belief in GiGi's mission to change the way the world views Down syndrome and promote acceptance for all! Because of your investment in GiGi's you are helping us create a more accepting, generous, and kind community! If you need further information, please contact Heather Lorenzen, Executive Director at fargowalk@gigisplayhouse.org or 701-551-7529.

Sincerely,



Heather Lorenzen
Executive Director



GiGiFIT Acceptance Challenge

June 5, 2021

gigisplayhouse.org/fargo



Fargo GiGiFIT Acceptance Challenge

Thank you for signing up for A Physical and Social MOVEment for Acceptance - Fargo's GiGiFIT Acceptance Challenge. See event details below and how to register as a Team Captain to be a part of this MOVEment and support GiGi's Playhouse Fargo!

MOVEment for Acceptance

GiGi's Playhouse Fargo's annual Walk & Fest will be hosting a kick-off to the GiGiFIT Acceptance Challenge on June 5, 2021 at 10:00 am. This kick-off event is for individuals with Down syndrome and immediate family only (up to 5 people) on Saturday, June 5, 2021 from 10:00 am - 11:00 am! All families must be pre-registered to attend the kick-off event. After the kick-off event we encourage your team to get together and MOVE for ACCEPTANCE at a location of your choice! The kick-off event will be live streamed on social media platforms.

Registration for 2021 GiGiFIT Acceptance Challenge

Register your TEAM today at www.gigisplayhouse.org/fargo
Click Events - Walk & Fest - "Register"

In-person registration is for kick-off event and immediate family members only!
Virtual is for all other team members joining and supporting your team!

Adult Registration with T-shirt \$21.00
Child Registration with T-shirt 10.00
Adult Registration without shirt \$10.00
Child Registration without shirt \$5.00

T-shirts will be pre-order ONLY.

Deadline to register to get a shirt will be May 13, 2021 at noon!

T-shirt pickup will be at the Playhouse on the following dates:

June 3 from 4:00 pm - 6:00 pm or June 4 from 11:00 am - 1:00 pm





Fargo GiGiFIT Acceptance Challenge Team Captain Registration Information

Team Captains- How do I sign up?

- Register your TEAM at www.gigisplayhouse.org/fargo
- Go to Walk & Fest Event
- Click the "Register Button". If you have created a walk team in the past your team and information from previous years will pull up. If this is your first time, you will need to create an account using an email or social media account. Follow the prompts to join a team, start a new team, or register as an individual.
- Register family members here on the next screen.

REGISTER FOR FARGO: GIGIFIT ACCEPTANCE CHALLENGE

YOUR INFORMATION YOUR REGISTRATION ADDITIONAL REGISTRATIONS PAYMENT INFORMATION CONFIRM AND SUBMIT

First, let's make sure we have all your information correct.

First Name *
GiGi's Playhouse

Last Name *
Fargo Team

Email Address *
fargo@gigisplayhouse.org

Street Address *
3224 20th Street South

Street Address 2

Fargo ND - North Dakota 58104


United States

Phone Number (Optional)
(701) 551-7529

Work

Text Notifications (Optional)
☐ Receive a text message when a donation is made on your behalf.

Do you want to join Fargo Team again?
☒ Yes, add me to the roster for Fargo Team.
☐ Not at this time. I may want to form my own team or join another team.



REGISTER FOR FARGO: GIGIFIT ACCEPTANCE CHALLENGE

YOUR INFORMATION YOUR REGISTRATION ADDITIONAL REGISTRATIONS PAYMENT INFORMATION CONFIRM AND SUBMIT

Register Friends or Family Members

Your Registration *

GiGi's Playhouse Fargo Team Virtual Adult Registration (\$10)

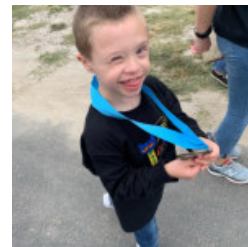
Which Playhouse do you support? Fargo

Additional Registrations (Optional)

You can register friends or family members as well. Please note that if you do not provide an email address, your friend will not be able to fundraise or earn challenge points and will need to rely on you to receive updates regarding the event.

ADD A REGISTRATION

PREVIOUS NEXT



**Please note Fargo's GiGiFIT Acceptance Challenge Walk Shirts will be pre-order ONLY.
Deadline to register to get a shirt will be May 13, 2021 at noon!**

**T-shirt pickup will be at the Playhouse on the following dates:
June 3, 2021 from 4:00 pm - 6:00 pm or June 4, 2021 from 11:00 am - 1:00 pm**





Fargo GiGiFIT Acceptance Challenge Team Captain Setting Up Your Page

Team Captains- Setting up your Page

- Once you complete your registration, you will see a button to "Set up your page." From there it will take you to the "Manage My Page" area (Note: you will also be able to create and manage your team page from this area as well).
 - Follow the check boxes to add a personal message, fundraising goal, and photos!

SET UP YOUR PAGE

We noticed that you don't have a photo attached to your user profile. Would you like to add one? [Click here to add your photo.](#)

How do you want your name to appear on your page *

Heather Lorenzen

This is how your name will appear on your personal page, in the team roster for GiGi's Believes, and in search results.

What's the one or two sentences that sums up why you're doing this? (Optional)

I believe in acceptance and inclusion! This MOVEMENT is to support my friend's mesodot

52 characters remaining

Since you are a member of GiGi's Believes, you will be using your team page to do your fundraising. [View your team page.](#)

What is your personal fundraising goal? *

\$ 321

☐ Not Fundraising this time around

Your team has set a fundraising goal of \$321 *

[Click here to change your team's goal](#)

Include Facebook/YouTube/Twitch live video stream code on your page (Optional)

Copy the full frame code here to show a live stream on your page.

Add a personal message to your page (Optional)

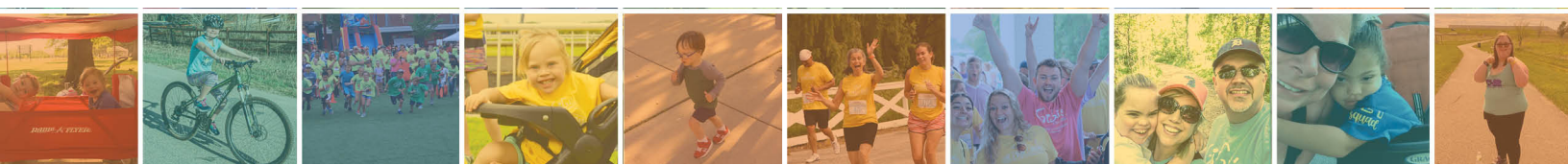
I am participating in the GiGiFIT Acceptance Challenge because I believe in GiGi's Playhouse and its mission of global acceptance for all. Please help me support GiGi's by donating to my page and spreading our

- Select the tab to join PLAYHOUSE LEADERBOARD
 - Check this Box and Choose GiGi's Playhouse Fargo
 - This box needs to be manually checked by Team Captains for results to be showcased via the platform

PICK YOUR PLAYHOUSE TO JOIN THE LEADERBOARD

Does your team belong to one of these groups?

NATIONAL ORGANIZATION - GIGI'S AT HOME	show more	Join Group
GIGI'S PLAYHOUSE ANNAPOLIS	show more	Join Group
GIGI'S PLAYHOUSE ATLANTA	show more	Join Group
GIGI'S PLAYHOUSE BUFFALO	show more	Join Group
GIGI'S PLAYHOUSE CANTON	show more	Join Group
GIGI'S PLAYHOUSE CEDAR RAPIDS	show more	Join Group
GIGI'S PLAYHOUSE FARGO	show more	<div> ✓ Already in Leave Group </div>

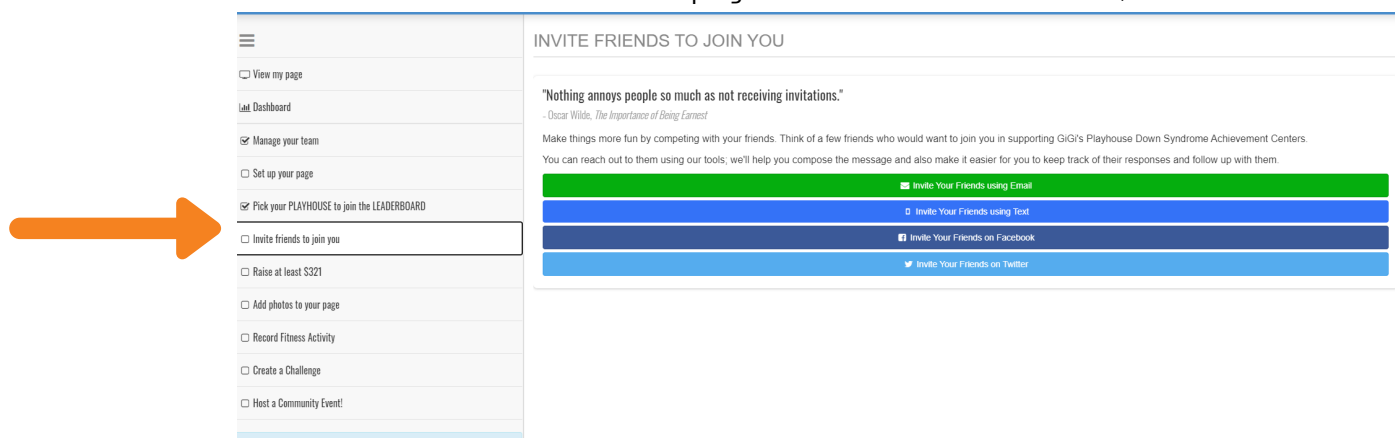




Fargo GiGiFIT Acceptance Challenge Team Captain Setting Up Your Page

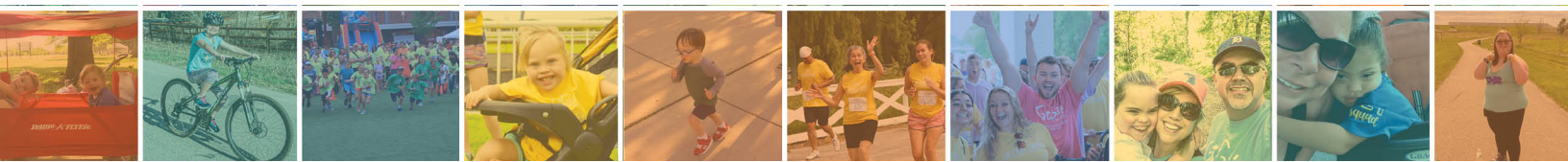
Team Captains- Setting up your Page

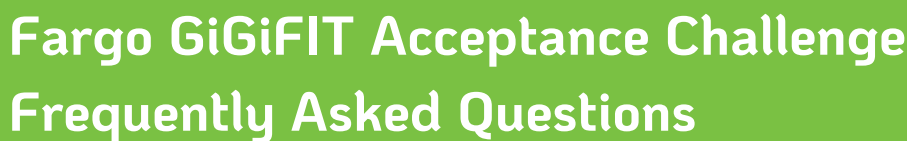
- Invite your friends/supporters to join your team
 - Use the following email or social media buttons below to add your supporters to your fundraising page!
 - Also be sure to check out the Thank You donor page under the "Raise at least \$321" tab.



Team Captains- Social Media Tips

- GiGi's Playhouse Fargo Sample Social Media Posts
 - GiGi's Playhouse Fargo is North Dakota's only Down Syndrome Achievement Center offering educational enrichment opportunities for individuals with Down syndrome and their families! Your support today allows <Your Team Name or GiGi's Participant Name> to participate in GiGi's programming at no cost to my family! Our favorite programs are <insert program name i.e. GiGiFIT>. Join our team today to support GiGi's Playhouse Fargo and the MOVEment for Acceptance --> <link your team URL>
 - Join the MOVEment for Acceptance and support <Team Name> in supporting GiGi's Playhouse Fargo! We are aspiring to reach our team goal of <insert goal i.e. \$3,210>! Join our team to help support GiGi's Playhouse mission in our community --><insert team URL>
 - Are your ready to MOVE for Acceptance! Join <team name> in supporting GiGi's Playhouse Fargo's GiGiFIT Acceptance Challenge walk! We challenge you to MOVE and support free educational enrichment opportuntiiies for GiGi's families! ACCEPT the challenge here --> <insert team URL>
- When posting on social media be sure to tag @gigisplayhousefargo and use the hashtags #MoveForAcceptance #AcceptanceChallenge #GiGisPlayhouseFargo





Click the "Registration Button" for the Fargo GiGiFIT Acceptance Challenge. If you have not already, you will need to create an account with One Cause using an email or social media account. Follow the prompts to join a team, start a new team, or register as an individual. Enter your information and submit the registration form to get started! Make sure when registering you search your supporter's TEAM NAME and pick Fargo as your Playhouse.

No, you can register as an individual. Just click the "Register" or "Donate" button and select the "Register as an Individual" option. All are welcome!

All funds raised for the Fargo GiGiFIT Acceptance Challenge will go to GiGi's Playhouse Fargo. Your support will allow us to continue to offer educational enrichment opportunities for individuals with Down syndrome and their families at no cost to them.

Every credit card transaction results in an additional processing fee. You have the option to help lower those fees for the Playhouse by covering it for your transaction.

After you have registered, click the "Manage My Page" option from the drop-down menu in the upper right corner (under profile picture). You will see a list of tabs on the left-hand side of your screen, one of which is "Invite Friends to Join You". You can invite people via email, or through other social media platforms.

No. The Fargo Playhouse will be selling PRE-ORDER shirts ONLY! When you register select the option that includes a shirt. Deadline to pre-order a shirt for the 2021 event will be May 13, 2021. Shirt pick up dates will be Thursday, June 3, 2021 from 4:00 pm - 6:00 pm and Friday, June 4, 2021 from 11:00 am - 1:00 pm. Additional fees may apply if you request your shirt to be shipped.





Fargo GiGiFIT Acceptance Challenge Frequently Asked Questions

Can anyone on my team attend the kick-off event?

No. Due to facility limitations and large group gatherings the kick-off event will be for only individuals with Down syndrome and up to five immediate family members! Once your family has registered you will be emailed the location and event kick-off details. It is required you RSVP (watch your email closer to the event). The kick-off event will be live streamed via our social media accounts. We encourage you to get together with your team at a location of your choice to MOVE for Acceptance after the kick-off event.

Will there be food or beverages available at the kick-off event?

There will be no food or beverages served at the event. The kick-off event is to celebrate Acceptance with a short program and MOVEment activity!

Will there be restrooms at the kick-off event?

Yes, limited restroom availability. We encourage you to use the restroom prior to coming to the kick-off event!

How can I support if I cannot attend?

We would love your support in the following ways:

- Make a donation to the event or a team
- Become a sponsor for the event
- Set up your own "MOVEment" team and fundraise in honor of GiGi's Playhouse Fargo
- Get your business or fitness friends to set up a team to support GiGi's Playhouse Fargo
- Watch the live stream on June 5, 2021 between 10:00 am -11:00 am
- Share social media posts and advocate for ACCEPTANCE

Are volunteers needed?

Yes! This event is made possible thanks to many volunteers leading up to the event and the day too! Please email volunteerfargo@gigisplayhouse.org to get involved!

If you have any questions not answered above, please call 701-551-7529 or email at walkfargo@gigisplayhouse.org





Local Sponsor Opportunities

Thank you for signing up to be a sponsor! Your generous sponsorship will be used to provide educational enrichment opportunities for individuals with Down syndrome and their families in the Fargo/Moorhead and surrounding communities.

Event sponsors receive high exposure on a per-event basis. We have individual event sponsorship opportunities for the GiGiFIT Acceptance Challenge on June 5, 2021. The annual Walk & Fest will be inspiring one neighborhood at a time as we MOVE for ACCEPTANCE. The event is designed to celebrate GiGi's Playhouse Fargo and what it has to offer by getting all our families, friends and neighbors up and active!

Program

- Sponsorship Announcement - Sponsors will be thanked prior to the event.

Web

- Name recognition on the "Sponsors" page of the website for the event.

E-Mail

- Event E-mails – Name recognition on the "Sponsors" section of every event e-mail.

Print

- Signage - Events with digital presentations will include name on a slide.
- T-shirt – Name on the Walk & Fest event t-shirt.
- Promotional Materials – Name recognition on any promotional materials that are printed.

Local Sponsor Jogger - \$2500

- Sponsorship Announcement
- Recognition on Website
- Recognition on Event Emails
- Recognition on Event Signage
- Recognition on Event T-shirt
- Recognition on Printed Materials

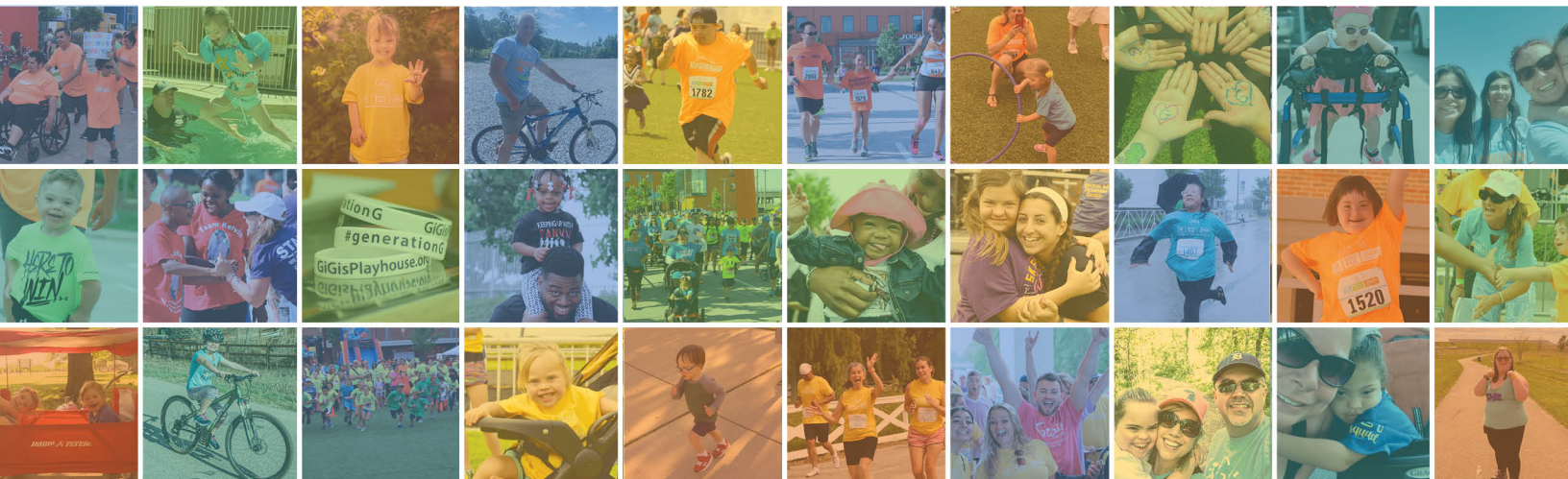
Local Sponsor Pacer - \$1000

- Sponsorship Announcement
- Recognition on Website
- Recognition on Event Signage
- Recognition on Event T-shirt

Local Sponsor Friend - \$500

- Sponsorship Announcement
- Recognition on Website
- Recognition on Event T-shirt

Sponsorship shirt deadline is May 3, 2021





Local Sponsor Commitment Form

Thank you for signing up to be a sponsor! Your generous sponsorship will be used to provide educational enrichment opportunities for individuals with Down syndrome and their families in the Fargo/Moorhead and surrounding communities.

YES, I would like to be a part of this MOVEment for Acceptance and sponsor GiGi's Playhouse Fargo!

Name: _____

Title: _____

Company: _____

Address: _____

City/State/Zip: _____

Phone: _____

Email: _____

SPONSORSHIP LEVEL

- ☐ Fargo GiGiFIT Acceptance Challenge Silver \$2,500
- ☐ Fargo GiGiFIT Acceptance Challenge Bronze \$1,000
- ☐ Fargo GiGiFIT Acceptance Challenge Friend \$500

- ☐ In-Kind Sponsor Value \$_____
- ☐ Media Sponsor Value \$_____

In-Kind Description: _____

Please return this form and your donation to fargo@gigisplayhouse.org or sponsor online at www.gigisplayhouse.org/fargo

If paying by check, please mail payment to: GiGi's Playhouse Fargo
 3224 20th Street South
 Fargo, ND 58103

GiGi's Playhouse Fargo is a 501(c)3 non-profit organization. Consult your tax professional for deduction advice regarding your sponsorship.

