



**WORLD DOWN  
SYNDROME DAY!  
CELEBRATE ON  
3/21!**

**Gigi's**  
Playhouse™

Down Syndrome Achievement Centers  
educate. inspire. believe.

# **HOW CAN YOU CELEBRATE WDSD?**

**WEAR MIX-MATCHED SOCKS!**

**WEAR BLUE AND YELLOW ATTIRE!**

**PERFORM RANDOM ACTS OF KINDNESS!**

**PARTICIPATE IN LOCAL EVENTS! JOIN US AT**

**GIGI'S PLAYHOUSE ON 3/21!**

**TAKE THE GENERATION G PLEDGE!**

# **WHAT DOES BEING "GENERATION G" MEAN?**

**I PROMISE TO BE #GENERATIONG.**

**I WILL MAKE A CONSCIOUS DECISION TO BE  
BETTER EVERY DAY.**

**I WILL BE ACCEPTING.**

**I WILL BE GENEROUS.**

**I WILL BE KIND**

**TAKE THE  
PLEDGE TODAY!**





**HERE ARE SOME  
FACTS ABOUT  
DOWN SYNDROME!**



# **FACT #1**

**THE LIFE EXPECTANCY FOR A  
PERSON WITH DOWN  
SYNDROME HAS  
INCREASED FROM AGE  
25 IN 1982 TO AGE  
60 TODAY!**



# FACT #2

**DOWN SYNDROME OCCURS  
WHEN THERE ARE THREE  
COPIES OF THE  
21ST CHROMOSOME.**



# FACT #3

**PEOPLE WITH DOWN  
SYNDROME ATTEND SCHOOL,  
WORK, HAVE MEANINGFUL  
RELATIONSHIPS, VOTE &  
CONTRIBUTE TO SOCIETY IN  
MANY WONDERFUL WAYS.**



# FACT #4

**DOWN SYNDROME IS THE MOST COMMON CHROMOSOMAL CONDITION, OCCURRING IN 1 OUT OF 700 PREGNANCIES. MOST BABIES ARE BORN TO WOMEN YOUNGER THAN 35.**





# FACT #5

PEOPLE WITH DOWN  
SYNDROME **MOST**  
**RESEMBLE** THEIR FAMILY  
MEMBERS, **NOT** OTHER  
PEOPLE WITH DOWN  
SYNDROME.



# FACT #6

**THE FIRST RECORDED SCIENTIFIC  
OBSERVATION OF DOWN  
SYNDROME WAS MADE  
BY JOHN LANGDON  
DOWN IN 1866.**



# FACT #7

**COMMON CHARACTERISTICS OF DOWN SYNDROME INCLUDE LOW MUSCLE TONE, SMALL STATURE, BEAUTIFUL ALMOND-SHAPED EYES, AND A SINGLE DEEP CREASE ACROSS THE CENTER OF THE PALM.**



**WANT TO GET MORE  
INVOLVED?  
VOLUNTEER AT GIGI'S  
PLAYHOUSE!**

**FIND OUT MORE  
INFO HERE!**

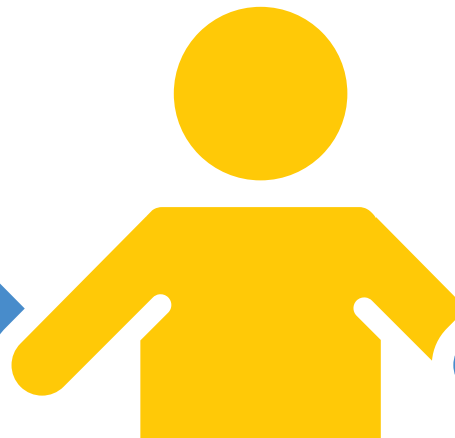
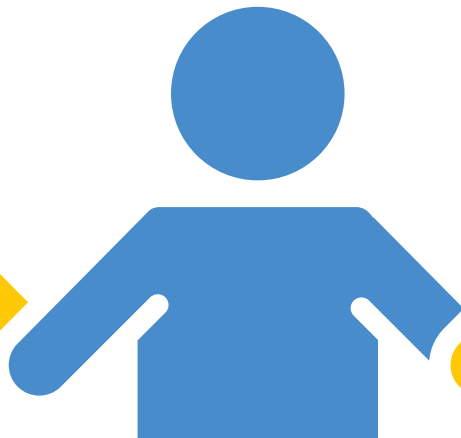
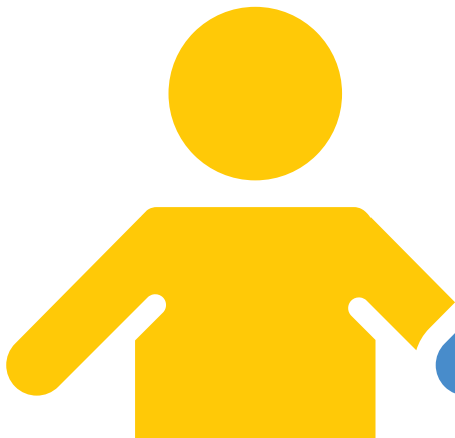


**Gigi's**  
Playhouse™

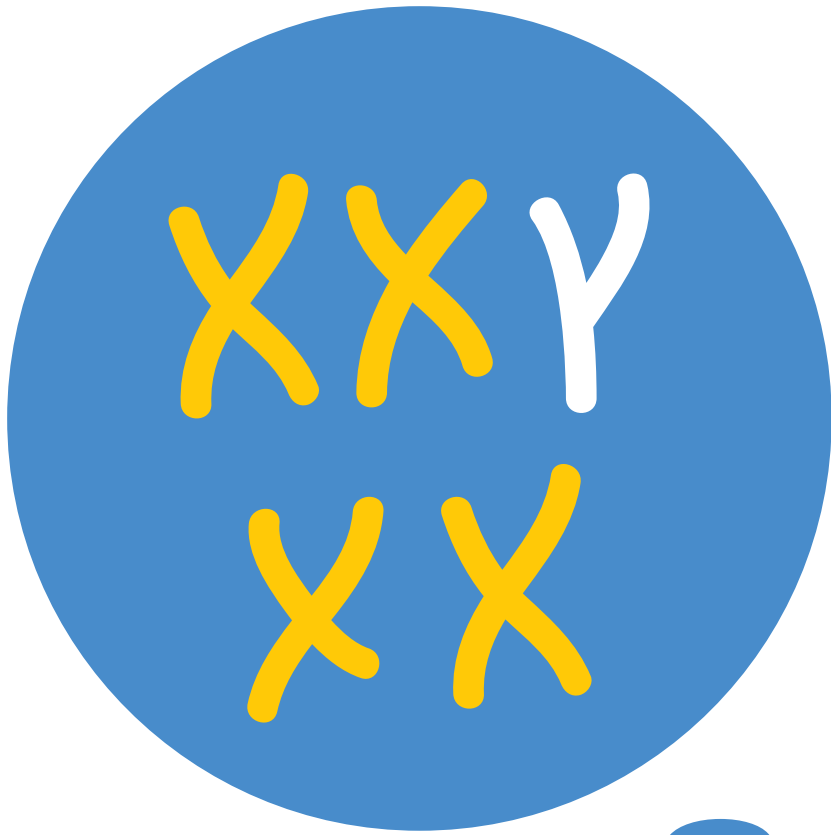
Down Syndrome Achievement Centers  
educate. inspire. believe.



## OTHER ITEMS TO CUT OUT!



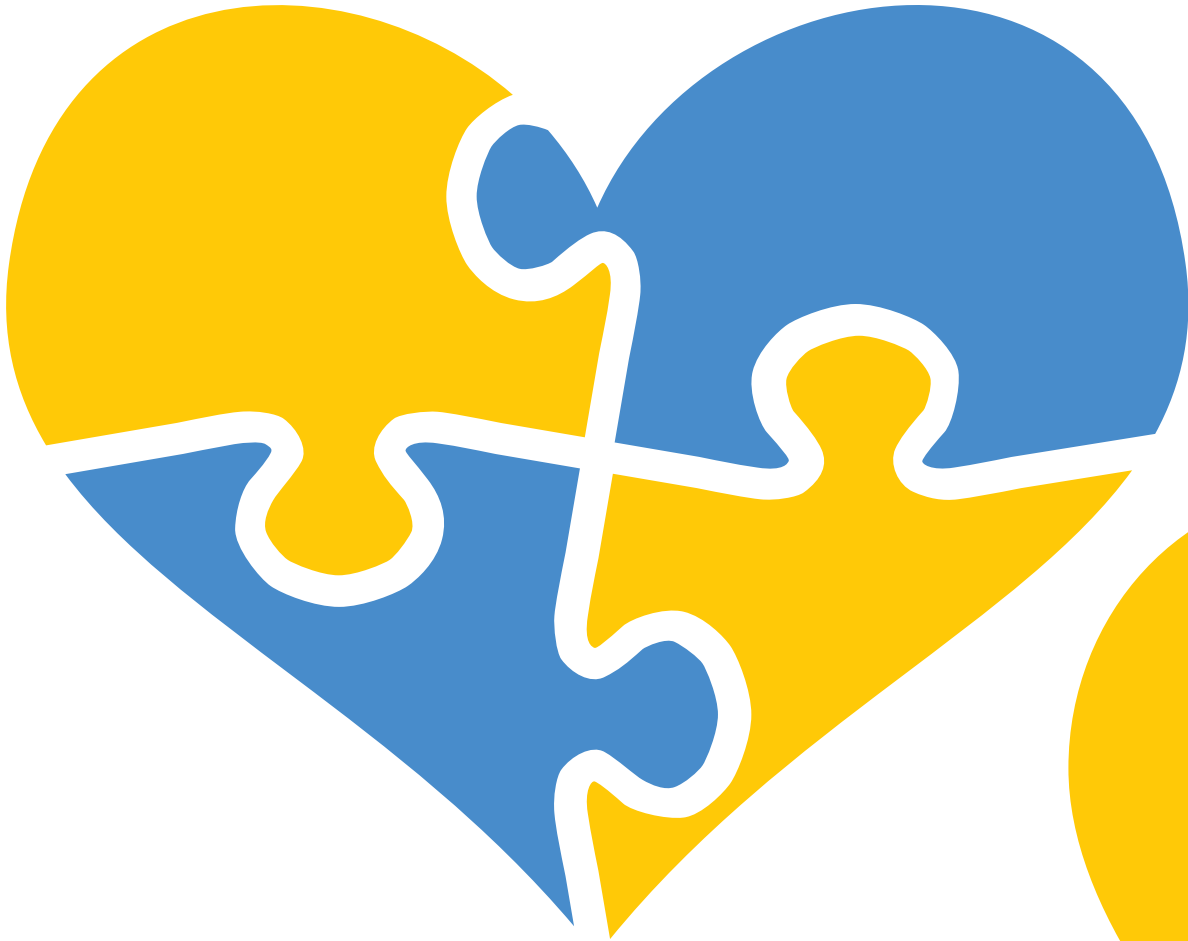
## OTHER ITEMS TO CUT OUT!



## OTHER ITEMS TO CUT OUT!



## OTHER ITEMS TO CUT OUT!



## OTHER ITEMS TO CUT OUT!

